

M4099D IMAGE SCANNER ILLUSTRATED PARTS CATALOGUE



**This document is used for maintenance purpose only.
The illustration of the part does not guarantee its availability.**

REVISION RECORD

Edition	Date published	Revised contents
01	December, 1999	First edition
02	February, 2000	Partial revision
03	February, 2000	2.8 OPTION added
04	August, 2000	Partial revision
05	January, 2002	P3, P23, P24 and P27 Parts modified P26, P30, P31, P36, P38 and P39 added
06	June, 2002	P39, P40 Parts added
07	August, 2002	P9, 10, 14, 24, 25, 36, 39, 40 modified
08	September, 2002	P10, 25, 26, 36, 38, 39, 40 modified
09	April, 2003	P3 (No.35, 35a, 67), P26 (No.160, 166) added. P40 added CA04315-B001 column for all lists deleted. CA04315-B012 column for all lists added.
10	June, 2003	P3, P10, P24, P25 Error corrected.
11	March, 2004	P2, P17, P25, P31, P33, P36 modified. P3, 7, P19 added. P20 deleted.
12	February, 2005	P8, P9, P39, P40 added. P10, P33 modified.

Specification No.: C150-G009-12EN

The contents of this manual are subject to change without prior notice

All Rights Reserved Copyright © 1999, 2000, 2002-2005 PFU LIMITED.

CONTENTS

1. HOW TO REFER TO THIS MANUAL

2. PARTS LIST AND PARTS DRAWINGS OF PRINTER MECHANISM

2.1 VISUAL INDEX OF PARTS	1
2.2 FINAL ASSEMBLY 1.....	2
2.3 FINAL ASSEMBLY 2.....	5
2.4 LOWER TRANSFER UNIT	8
2.5 HOPPER UNIT	17
2.6 ADF UNIT.....	22
2.7 UPPER TRANSFER UNIT.....	30
2.8 OPTION (ENDOSER).....	36
2.9 CABLE.....	39

1.HOW TO REFER TO THIS MANUAL

Example

Index No.	Composition & Quantity							SP	Specification	Parts name	CA04315 -B001	CA04315 -B002	CA04315 -B003	Remarks
	1	2	3	4	5	6	7							
1~123			1						LOWER TRANSFER UNIT	√	√	√	Refer to P.4	
1~3			1						FRAME ASY	√	√	√	Refer to P.4	
1				1					FRAME ASY	√	√	√		
2				4				@	CA98001-4065	√	√	√		
3				4					SCREW	√	√	√		
4~9			1					*	CA04315-F095	√	√	√		
4				1					PLATE	√	√	√		
5				1					STEPPING MOTOR	√	√	√		
6				1					FG CABLE	√	√	√		
7				2					SCREW	√	√	√		
8				1					PULLEY	√	√	√		
9				1					SCREW	√	√	√		
10				3					SCREW	√	√	√		

(1) This figure shows the index number of the part in drawing.

(2) These columns show the construction levels. A higher level part consists of the following lower level parts listed until the quantity of the next part appears at the same level. See example (3).

(3) m~n shows an assembly or unit consisting of more than one part.

(4) These parts are at the same level and belong to the same upper level part.

(5) Parts with asterisk (*) are recommended spare parts and consumable parts.

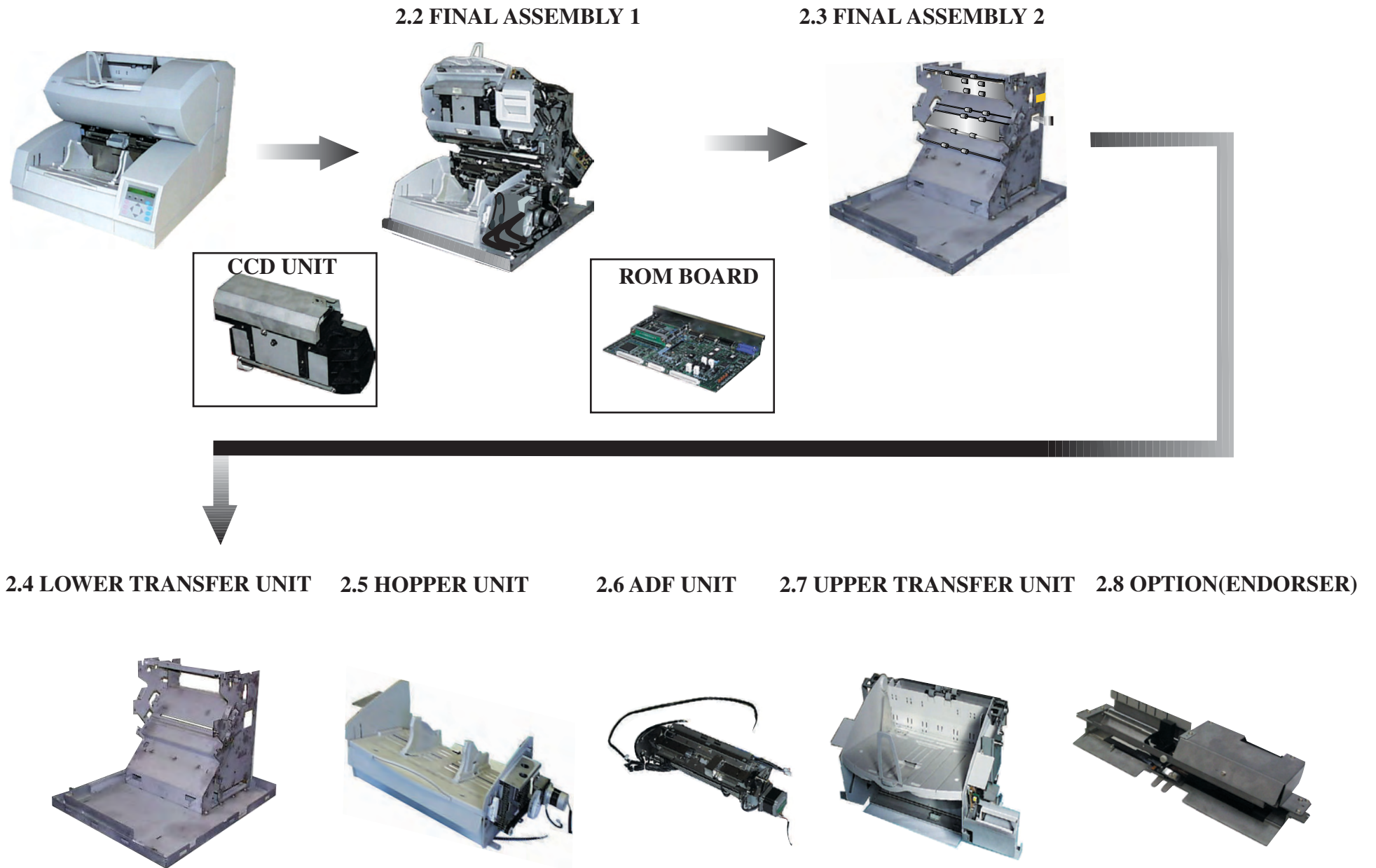
(6) The SCREW is the part name of Index No.10.

(7) Parts with an at (@) can be bought.

Parts with no marks cannot be bought.

(8) Page number to be referred.

2.1 VISUAL INDEX



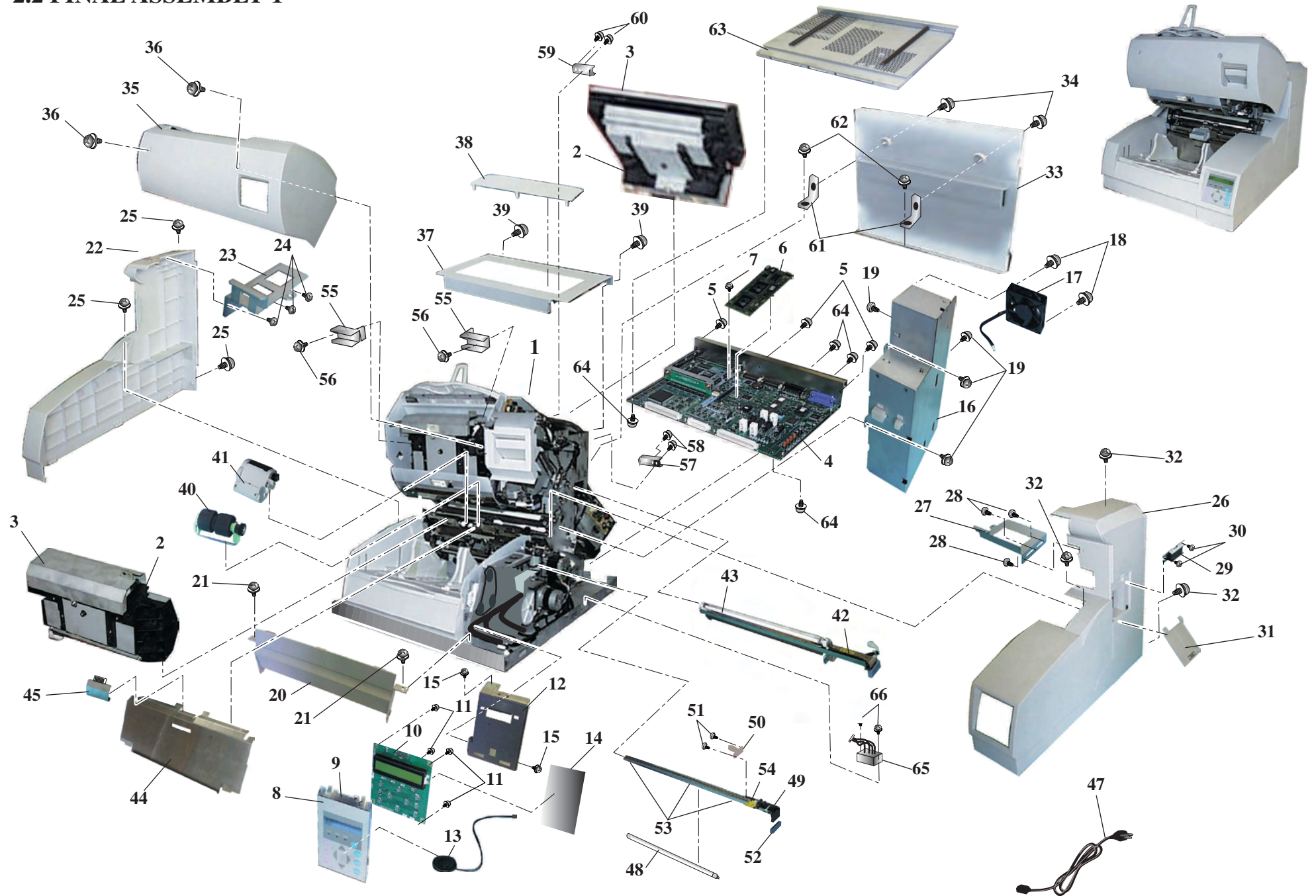
2.2 FINAL ASSEMBLY 1

Index No.	Composition & Quantity							SP	Specification	Parts name	CA04315 -B002	CA04315 -B003/B017	CA04315 -B012	Remarks
1~62	1								IMAGE SCANNER			√		
1~62	1								IMAGE SCANNER	√				
1~62	1								IMAGE SCANNER		√			
1	1								MECHANICAL UNIT	√	√	√		
2~3	2								CCD UNIT	√	√	√		
2		2					*	CA04315-E401	CCD UNIT	√	√	√		
3		2							COVER	√	√	√		
4	1						*	CA04315-J001	ROM BOARD	√	√	√		
5	3								SCREW	√	√	√		
6	1						*	CA02919-0511 CA02919-0510 [11]	IPC-3D	√	√	√		
7	1								SCREW	√	√	√		
8~15	1								OPERATOR PANEL ASY	√	√	√		
8~9		1					@	CA04315-G960	OP PANEL ASY	√	√	√		
8			1						OPERATOR PANEL COVER	√	√	√		
9			1						OPERATOR PANEL SHEET	√	√	√		
10		1					*	CA04315-0333	OPERATOR PANEL	√	√	√		
11		4							SCREW	√	√	√		
12		1					@	CA04315-G962	BRACKET ASY	√	√	√		
13		1					*	CA04315-0911	SPEAKER	√	√	√		
14		1							SHIELD INSULATER	√	√	√		
15	2								SCREW	√	√	√		
16~18	1								POW UNIT	√	√	√		
16		1					*	CA04315-0777	POWER SUPPLY UNIT	√	√	√		
17		1					*	CA04315-F810 CA04315-0810 [11]	FAN ASY	√	√	√		
18		2							SCREW	√	√	√		
19	4								SCREW	√	√	√		
20~43	1								COVER	√	√	√		
20		1					@	CA04315-Y920	LOWER COVER	√	√	√		
21		2							SCREW	√	√	√		
22~24		1					@	CA04315-F910	L COVER ASY	√	√	√		
22			1						L COVER	√	√	√		
23			1						BRACKET	√	√	√		
24			3						TAPPING SCREW	√	√	√		
25		3							SCREW	√	√	√		
26~31		1					@	CA04315-F901	R COVER ASY	√	√	√		
26			1						R COVER	√	√	√		
27			1						BRACKET	√	√	√		
28			3						TAPPING SCREW	√	√	√		
29			1				@	CA98010-1871	MAGNET CATCH	√	√	√		

2.2 FINAL ASSEMBLY 1

Index No.	Composition & Quantity				SP	Specification	Parts name	CA04315-B002	CA04315-B003/B017	CA04315-B012	Remarks
			2				TAPPING SCREW	√	√	√	
			1		@	CA04315-G902	SIDE COVER	√	√	√	
		3					SCREW	√	√	√	
10		1			@	CA04315-G935 CA04315-Y934	COVER ASY REAR COVER	√	√	√	
		5					SCREW	√	√	√	
		1			@	CA04315-F940	UPPER TRANSFER COVER	√	√		
09		1			@	CA04315-F942	UPPER TRANSFER COVER			√	
09	35a		1		@	PA93005-Y025	LABEL C			√	Refer to the figure on P.41
		2					SCREW	√	√	√	
		1			@	CA04315-Y930	TOP COVER	√	√	√	
		1			@	CA04315-Y931	COVER	√	√	√	
		2					SCREW	√	√	√	
	1				*	CA04315-F705	BRAKE ROLLER	√	√	√	Refer to P.29 Consumables
	1				*	CA04315-F711	PICK ROLLER UNIT	√	√	√	Refer to P.29 Consumables
	1				@	CA04315-F150	LAMP ASY	√	√	√	Back-Side
	1				*	CA04315-0430	LAMP	√	√	√	Back-Side Consumables
	1				@	CA04315-G751	GATE ASY	√	√	√	
	1				*	CA04315-G730	PAD	√	√	√	Consumables
	1				@	CA63028-3001	AC POWER CORD	√		√	
	1				@	05 CA63002-3001 C66L-4740-0003- #L3R003	AC CABLE		√		For CA04315-B003 II
11	47	1			@	CA63063-3001	AC CABLE		√		For CA04315-B017
	48~54	1			@	CA04315-F325	LAMP ASY	√	√	√	Front-Side
		1			*	CA04315-0430	LAMP	√	√	√	Front-Side Consumables
		1					LAMP HOUSE ASY	√	√	√	
		1			@	CA98010-1851	DURACON CATCH	√	√	√	
		2					SCREW	√	√	√	
		1					LEVER	√	√	√	
		3					CABLE CLAMP	√	√	√	
		1					LABEL	√	√	√	
	2				@	CA04315-G398	METAL FITTING ASY	√	√	√	
	2						SCREW	√	√	√	
	1				@	CA04315-G160	METAL FITTING ASY	√	√	√	
	2						SCREW	√	√	√	
	1				@	CA04315-G161	METAL FITTING ASY	√	√	√	
	2						SCREW	√	√	√	
	2				@	CA04315-Y938	METAL FITTING	√	√	√	
	2						SCREW	√	√	√	
	1						COVER	√	√	√	
	4						SCREW	√	√	√	
	1				*	CA04315-0780	RELAY	√	√	√	
	2						SCREW	√	√	√	
09	67	1			@	PA93005-Y024	LABEL H			√	Refer to the figure on P.41

2.2 FINAL ASSEMBLY 1



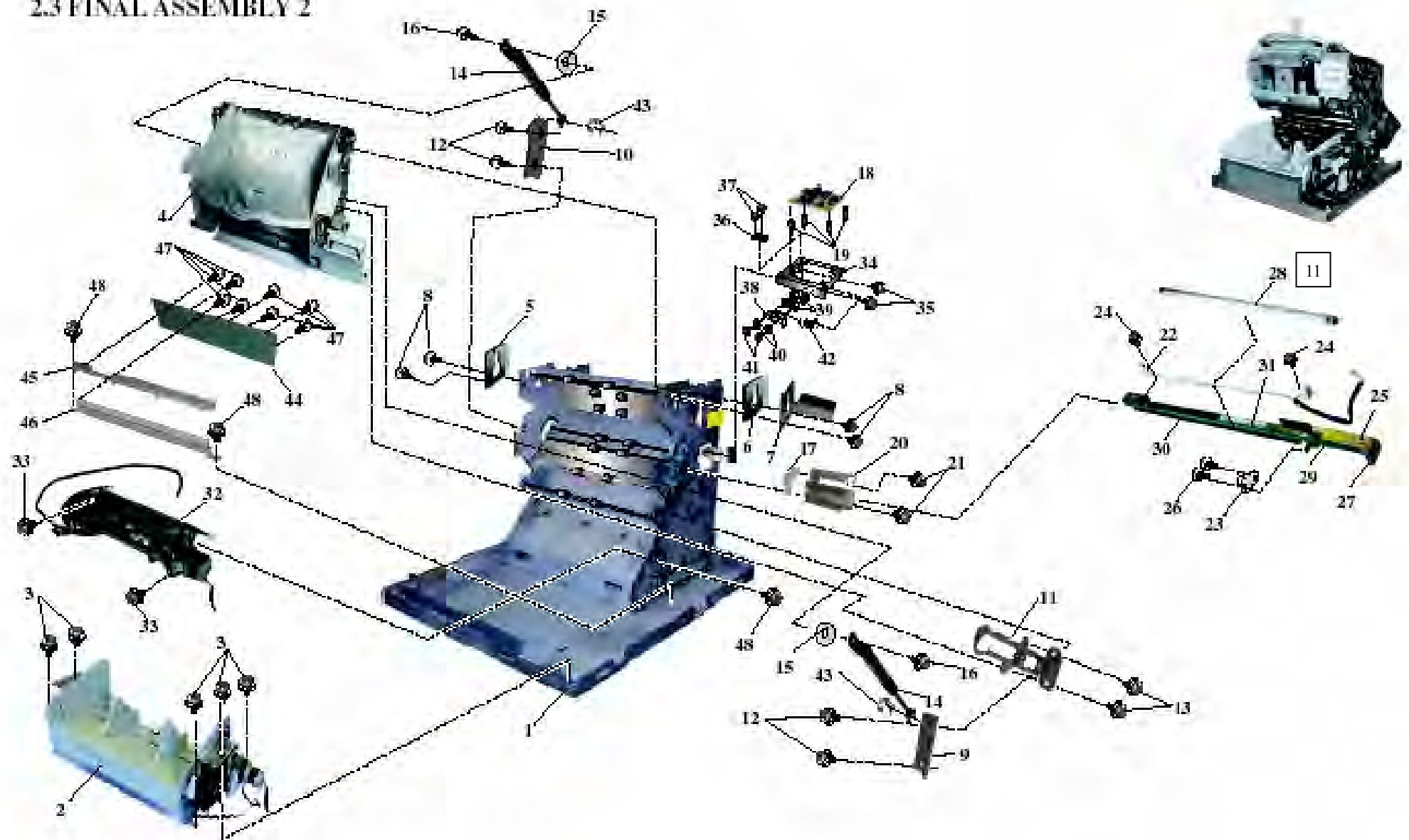
2.3 FINAL ASSEMBLY 2

Index No.	Composition & Quantity							SP	Specification	Parts name	CA04315 -B002	CA04315 -B003/B017	CA04315 -B012	Remarks
1~48	1								MECHANICAL UNIT	√	√	√		
1	1								LOWER TRANSFER UNIT	√	√	√	Refer to P.12	
2	1								HOPPER UNIT	√	√	√	Refer to P.20	
3	5								SCREW	√	√	√		
4	1								UPPER TRANSFER UNIT	√	√	√	Refer to P.34	
5	1						@	CA01023-Z107	PLATE	√	√	√		
6	1						@	CA04315-Y113	PLATE	√	√	√		
7	1						@	CA04315-Y115	PLATE	√	√	√		
8	4								SCREW	√	√	√		
9	1						@	CA04315-G108	METAL FITTING ASY	√	√	√	Right	
10	1						@	CA04315-G109	METAL FITTING ASY	√	√	√	Left	
11	1						@	CA98010-1837	HINGE	√	√	√		
12	4								SCREW	√	√	√		
13	2								SCREW	√	√	√		
14	2						@	CA98001-4062	GAS SPRING	√	√	√		
15	2								WASHER	√	√	√		
16	2								SCREW	√	√	√		
17	1						@	CA98010-1836	LATCH	√	√	√		
18	1						*	CA04315-0450	INVERTER	√	√	√		
19	4								SPACER	√	√	√		
20	1						@	CA04315-G063	BRACKET ASY	√	√	√		
21	2								SCREW	√	√	√		
22~31	1						@	CA04315-F150	LAMP ASY	√	√	√		
22	1								LAMP HOUSE ASY	√	√	√		
23	1						@	CA98010-1851	DURACON CATCH	√	√	√		
24	2								SCREW	√	√	√		
25	1						@	CA04315-G150	METAL FITTING ASY	√	√	√		
26	2								SCREW	√	√	√		
27	1						@	CA04071-Y702	LEVER	√	√	√		
28	1						*	CA04315-0430	LAMP	√	√	√	Back-Side Consumables	
29	1								LABEL	√	√	√		
30	1						@	CA98010-1515	CABLE CLAMP	√	√	√		
31	1								LABEL	√	√	√		
32	1						*	CA04315-E701	ADF UNIT	√	√	√	Refer to P.27	
33	2								SCREW	√	√	√		
34	1						@	CA04315-Y951	METAL FITTING	√	√	√		
35	2								SCREW	√	√	√		
36	1								MICRO SWITCH	√	√	√		

2.3 FINAL ASSEMBLY 2

Index No.	Composition & Quantity							SP	Specification	Parts name	CA04315 -B002	CA04315 -B003/B017	CA04315 -B012	Remarks
37			2						SCREW	√	√	√		
38			1				@	CA04315-Y952	METAL FITTING	√	√	√		
39			4						SPACER	√	√	√		
40			2						SPACER	√	√	√		
41			2						SCREW	√	√	√		
42			1						COIL SPRING	√	√	√		
43			2						E RING	√	√	√		
44~48			1				@	CA04315-F825	JUNCTION ASY	√	√	√		
44			1						JUNCTION BOARD	√	√	√		
45			1						PLATE	√	√	√		
46			1						PLATE	√	√	√		
47			8						SCREW	√	√	√		
48			3						SCREW	√	√	√		

2.3 FINAL ASSEMBLY 2



2.4 LOWER TRANSFER UNIT

Index No.	Composition & Quantity							SP	Specification	Parts name	CA04315 -B002	CA04315 -B003/B017	CA04315 -B012	Remarks
1~123			1							LOWER TRANSFER UNIT	√	√	√	Refer to P.4
1~3			1							FRAME ASY	√	√	√	Refer to P.4
1			1							FRAME ASY	√	√	√	
2				4			@	CA98001-4065	RUBBER FOOT	√	√	√		
3				4					SCREW	√	√	√		
4~9			1				*	CA04315-F095	MOTOR ASY	√	√	√		
4				1					PLATE	√	√	√		
5				1					STEPPING MOTOR	√	√	√		
6				1					FG CABLE	√	√	√		
7				2					SCREW	√	√	√		
8				1					PULLEY	√	√	√		
9				1					SCREW	√	√	√		
10				3					SCREW	√	√	√		
11				1			@	CA04315-Y183	COLLAR	√	√	√		
12				1					E RING	√	√	√		
13				1			@	CA04315-Y010	METAL FITTING	√	√	√		
14				2					SCREW	√	√	√		
15				2			@	CA04315-Y033	METAL FITTING	√	√	√		
16				4					SCREW	√	√	√		
17				1			@	CA04315-Y057	METAL FITTING	√	√	√		
18				1			@	CA04315-Y065	METAL FITTING	√	√	√		
19				2					SCREW	√	√	√		
20				2			@	CA04315-Y068	FLAT SPRING	√	√	√		
21				2			@	CA04315-Y069	METAL FITTING	√	√	√		
22				2					SCREW	√	√	√		
23				7				CA80409-0183 [12]	BEARING	√	√	√		
24				7					SCREW	√	√	√		
25~28				1			@	CA04315-F103	FEED ROLLER	√	√	√		
25				1					ROLLER ASY	√	√	√		
26				1				CA80409-0183 [12]	BEARING	√	√	√		
27				2					PULLEY	√	√	√		
28				1					E RING	√	√	√		
29~32				1			@	CA04315-F101	FEED ROLLER	√	√	√		
29				1					ROLLER ASY	√	√	√		
30				1				CA80409-0183 [12]	BEARING	√	√	√		
31				1					PULLEY	√	√	√		
32				1					E RING	√	√	√		
33~37				1			@	CA04315-F105	FEED ROLLER	√	√	√		
33				1					ROLLER ASY	√	√	√		

2.4 LOWER TRANSFER UNIT

Index No.	Composition & Quantity				SP	Specification	Parts name	CA04315 -B002	CA04315 -B003/B017	CA04315 -B012	Remarks
34			1			CA80409-0183 [12]	BEARING	√	√	√	
35			1				PULLEY	√	√	√	
36			1				E RING	√	√	√	
37			1				RUBBER	√	√		07
38~41		3			@	CA04315-F100	FEED ROLLER	√	√	√	
38			3				ROLLER ASY	√	√	√	
39			3			CA80409-0183 [12]	BEARING	√	√	√	
40			3				PULLEY	√	√	√	
41			3				E RING	√	√	√	
42~45		1			@	CA04315-F104	FEED ROLLER	√	√	√	
42			1				ROLLER ASY	√	√	√	
43			1				PULLEY	√	√	√	
44			1				E RING	√	√	√	
45			1			CA80409-0183 [12]	BEARING	√	√	√	
46		2			@	CA01023-Z105	PLATE	√	√	√	
47		5					SCREW	√	√	√	
48		3			@	CA04315-Y090	PLATE	√	√	√	
49		1			*	CA98010-1839	BELT	√	√	√	
50		1			*	CA98010-1840	BELT	√	√	√	
51		2					BEARING	√	√	√	
52		1					E RING	√	√	√	
53~55		1			@	CA04315-F091	METAL FITTING ASY	√	√	√	
53			1				BRACKET ASY	√	√	√	
54			2				BEARING	√	√	√	
55			1				E RING	√	√	√	
56		1			@	CA04315-Y080	COIL SPRING	√	√	√	
57		2					SCREW	√	√	√	
58		2			@	CA04315-Y172	SHAFT	√	√	√	
59		2					E RING	√	√	√	
60		2			@	CA04315-Y393	SPACER	√	√	√	
61		2					SCREW	√	√	√	
62		1			@	CA04315-Y170	METAL FITTING	√	√	√	
63		1			@	CA04315-Y171	METAL FITTING	√	√	√	
64		4					SCREW	√	√	√	
65		1			@	CA04315-G182	METAL FITTING ASY	√	√	√	
66		2					SCREW	√	√	√	
67		1			*	CA04315-Y179	DISELECTRIC BRUSH	√	√	√	
68		2					SCREW	√	√	√	
69		2			@	CA04315-G021	SHAFT ASY	√	√	√	

2.4 LOWER TRANSFER UNIT

Index No.	Composition & Quantity				SP	Specification	Parts name	CA04315 -B002	CA04315 -B003/B017	CA04315 -B012	Remarks
70			2				SCREW	√	√	√	
71			1		@	CA04315-Y071	SHEET GUIDE	√	√	√	
72			2				SCREW	√	√	√	
73			1		@	CA04315-Y093	SHEET GUIDE	√	√	√	
74			4				SCREW	√	√	√	
75			1		@	CA04315-Y070	SHEET GUIDE	√	√	√	
76			2				SCREW	√	√	√	
77~80			1		@	CA04315-F051	SHEET GUIDE ASY	√	√	√	
77			1		@	CA04315-F050	SHEET GUIDE ASY	√	√	√	White Plate
77			1		@	CA04315-F054	SHEET GUIDE ASY	√	√	√	Black Background (Option)
78			1		*	CA98010-0840 0890 CA04315-0890 [10]	SENSOR	√	√	√	Note [07]
79			1		@	CA04315-Y768	FLAT SPRING	√	√	√	
80			1				SCREW	√	√	√	
81			2		@	CA04315-Y085	COIL SPRING	√	√	√	
82			2		@	CA98010-1842 CA04315-3305 [12]	FLANGE BUSHING	√	√	√	
83			2				SPACER	√	√	√	
84			2				SCREW	√	√	√	
85~87			1		@	CA04315-F060	SHEET GUIDE ASY	√	√	√	
85			1				SHEET GUIDE ASY	√	√	√	
86			1				GLASS	√	√	√	
87			2				LABEL	√	√	√	
88~91			1		@	CA04315-F073	SHEET GUIDE ASY	√	√	√	
88			1		@	CA04315-G073	SHEET GUIDE ASY	√	√	√	
89			1		*	CA98010-0840 0890	SENSOR	√	√	√	Note [07]
90			1				LEAF SPRING	√	√	√	
91			1				SCREW	√	√	√	
92			2				SCREW	√	√	√	
93			1		@	CA04315-Y185	METAL FITTING	√	√	√	
94			2				SCREW	√	√	√	
95			1		@	CA98010-2258	MICROSWITCH	√	√	√	
96			2				SCREW	√	√	√	
97			1		@	CA04315-Y949	METAL FITTING	√	√	√	
98			1				SCREW	√	√	√	
99			1		@	CA04315-Y945	METAL FITTING	√	√	√	
100			1		@	CA04315-Y946	METAL FITTING	√	√	√	
101			1		@	CA04315-Y955	COIL SPRING	√	√	√	
102			1		@	CA98010-2258	MICROSWITCH	√	√	√	
103			1		@	CA04315-Y947	METAL FITTING	√	√	√	
104			1				SCREW	√	√	√	

[07] Note: These parts will be applied to the scanner of revision C5 or later. The old parts can be used for the scanner of revision C4 or earlier.

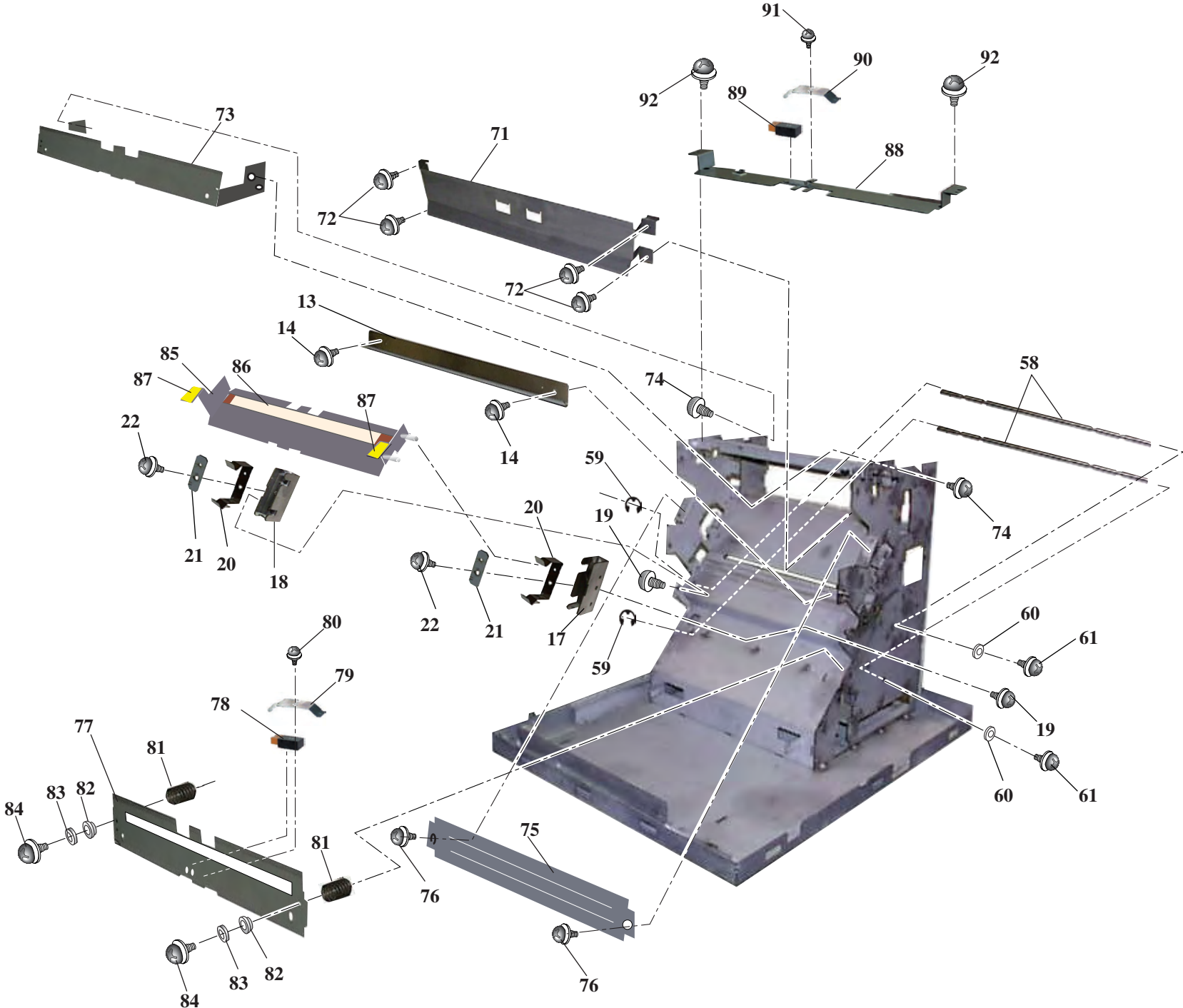
When the old parts are out of stock and need replacing with the new parts, make sure to replace Index No. 78, 89 in Figure 2.4 and No. 8 in Figure 2.9 together.

[08] (See ECN: CA04315-0021 for details.)

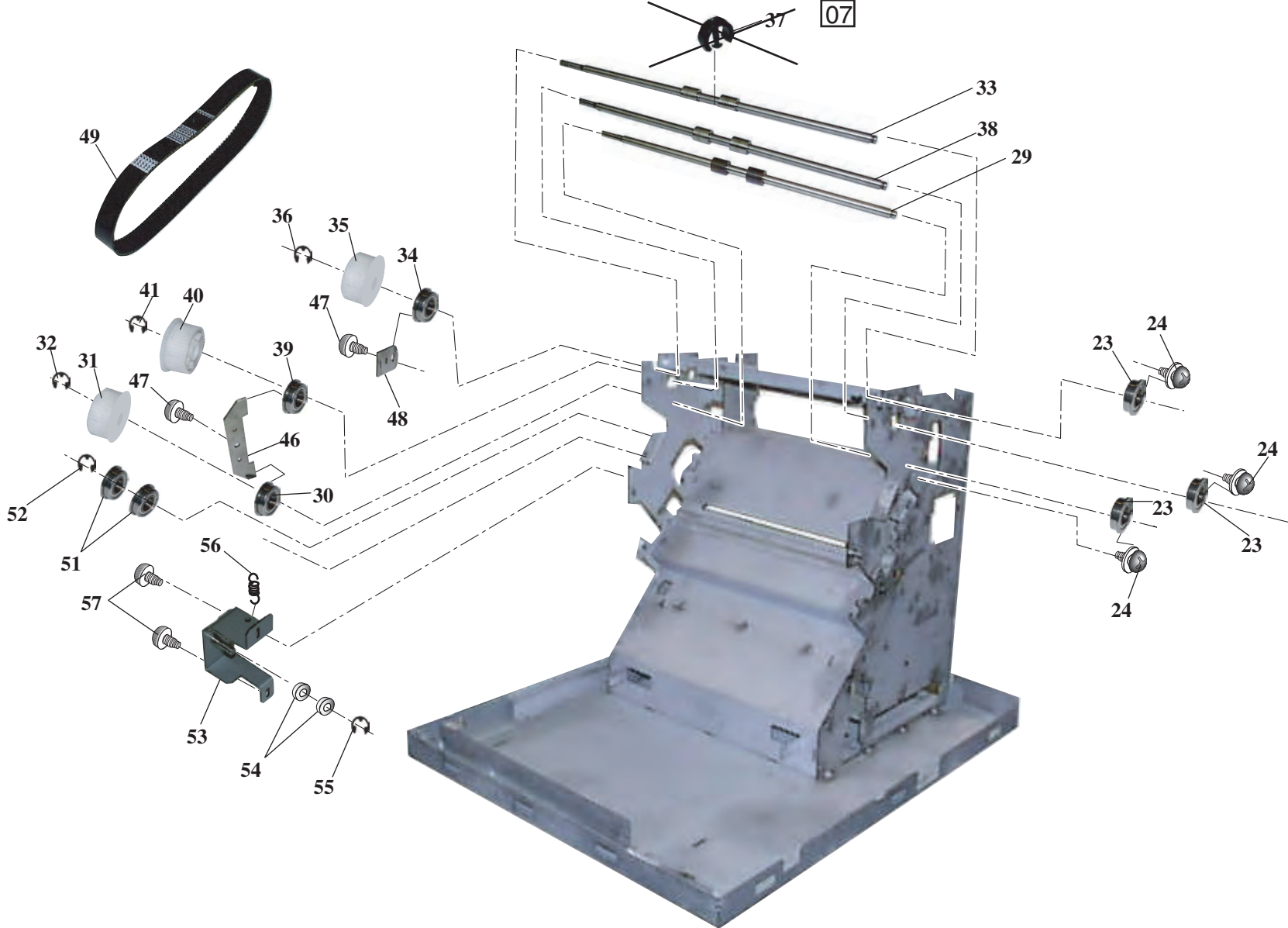
2.4 LOWER TRANSFER UNIT

Index No.	Composition & Quantity				SP	Specification	Parts name	CA04315 -B002	CA04315 -B003/B017	CA04315 -B012	Remarks
105			2				SCREW	√	√	√	
106			2				SCREW	√	√	√	
107			1		@	CA04315-Y174	METAL FITTING	√	√	√	
108			1		@	CA04315-Y177	COLLAR	√	√	√	
109			1				E RING	√	√	√	
110			1				LABEL	√	√	√	
111			1				PLATE	√	√	√	
112			1				METAL FITTING	√	√	√	
113			2				SCREW	√	√	√	
114			2		@	CA04315-Z752	SPRING	√	√	√	
115			2		@	CA04315-Y937	PLATE	√	√	√	
116			2				SCREW	√	√	√	
117~120			1		@	CA04315-F178	METAL FITTING ASY	√	√	√	
117			1		@	CA04315-G178	METAL FITTING ASY	√	√	√	
118			1		@	CA04315-Y188	METAL FITTING	√	√	√	
119			1				E RING	√	√	√	
120			1				WASH	√	√	√	
121			3				SCREW	√	√	√	
122			1		@	CA04315-Y023	PLATE	√	√	√	
123			2				SCREW	√	√	√	

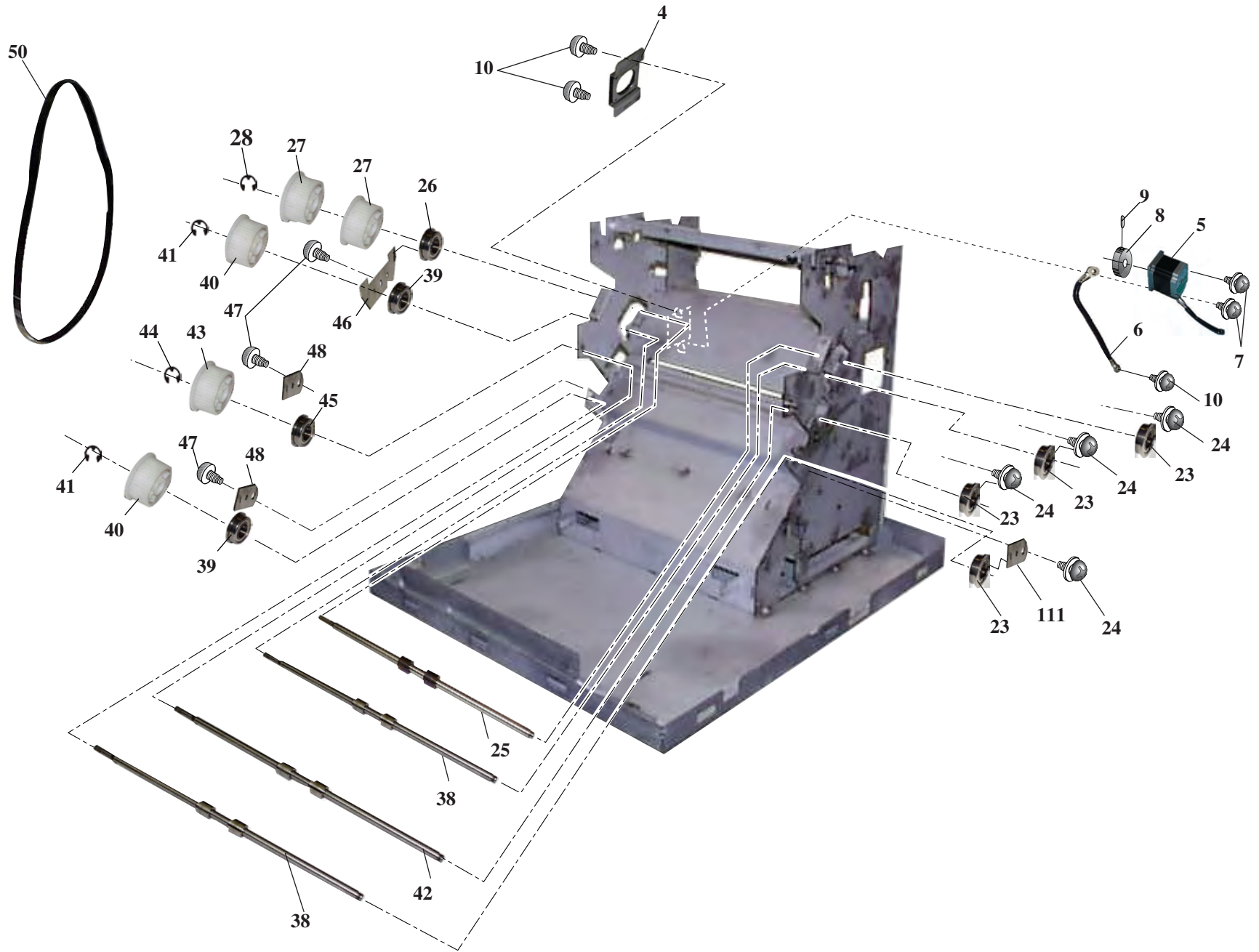
2.4 LOWER TRANSFER UNIT 2



2.4 LOWER TRANSFER UNIT 3

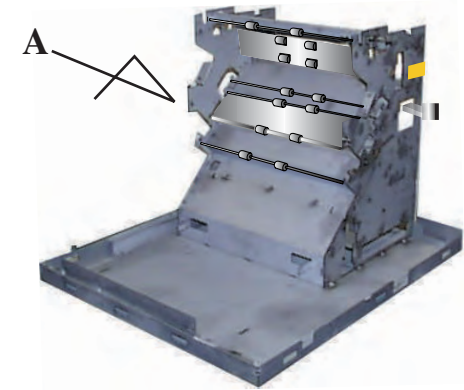
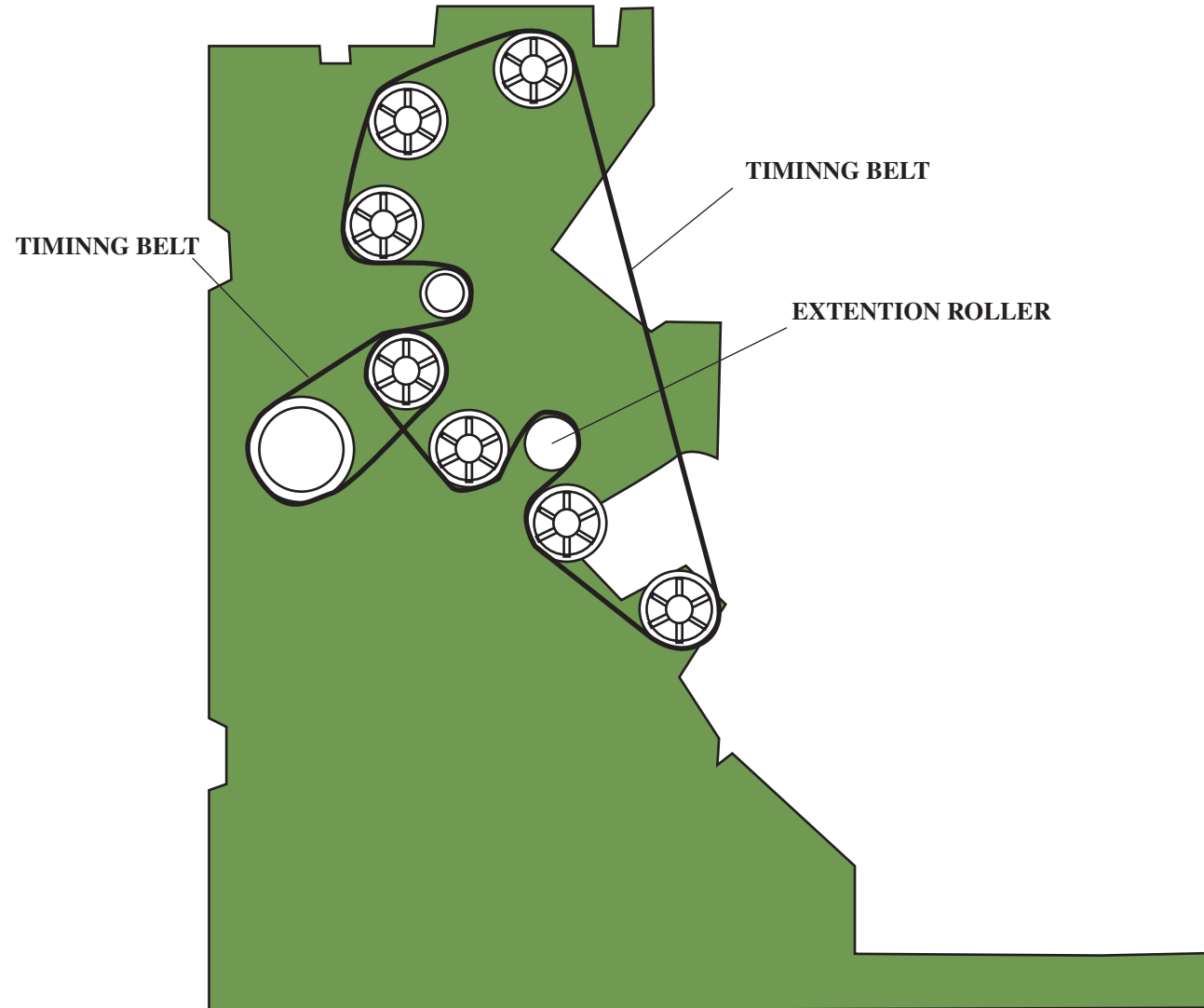


2.4 LOWER TRANSFER UNIT 4



2.4 LOWER TRANSFER UNIT 5

A ARROW VIEW



2.5 HOPPER UNIT

Index No.	Composition & Quantity							SP	Specification	Parts name	CA04315 -B002	CA04315 -B003/B017	CA04315 -B012	Remarks
1~98			1						HOPPER UNIT	√	√	√	Refer to P.7	
1			1						FRAME ASY	√	√	√		
2			1				@	CA04315-Y610	HOPPER TABLE	√	√	√		
3			1				*	CA98010-1884	SENSOR	√	√	√		
4			1				@	CA04315-Y618	METAL FITTING	√	√	√		
5			2						SCREW	√	√	√		
6~9			2				@	CA04315-F617	METAL FITTING ASY	√	√	√		
6			2						BRACKET ASY	√	√	√		
7			2						TENSION ROLLER	√	√	√		
8			2						BUSH	√	√	√		
9			2						E RING	√	√	√		
10			2						SCREW	√	√	√		
11			2				@	CA04315-Y615	METAL FITTING	√	√	√		
12			2				@	CA04315-Y616	METAL FITTING	√	√	√		
13			4						SCREW	√	√	√		
14~16			4				@	CA02869-F515	TENSION ASY	√	√	√		
14			4						TENSION BRACKET ASY	√	√	√		
15			4				@	CA02869-Y514	TENSION ROLLER	√	√	√		
16			4						E RING	√	√	√		
17			4						SCREW	√	√	√		
18~20			2				@	CA02869-F613 CA04315-F613 [11]	TENSION ASY	√	√	√		
18			2						TENSION BRACKET ASY	√	√	√		
19			2				@	CA02869-Y514	TENSION ROLLER	√	√	√		
20			2						E RING	√	√	√		
21			2						SCREW	√	√	√		
22			2				@	CA02869-Y514	TENSION ROLLER	√	√	√		
23			2						E RING	√	√	√		
24~28			1						SHAFT ASY	√	√	√		
24			1				@	CA02869-Y523	SHAFT	√	√	√		
25			1						BEARING	√	√	√		
26			1				@	CA02869-Y531	SPACER	√	√	√		
27			1				@	CA02869-Y524	SPROCKET	√	√	√		
28			2						SCREW	√	√	√		
29			2				@	CA02869-Y524	SPROCKET	√	√	√		
30			4						SCREW	√	√	√		
31			1				@	CA02869-Y526	PULLEY	√	√	√		
32			1				@	CA02869-Y527	GEAR	√	√	√		
33			1						BEARING	√	√	√		
34			2						SCREW	√	√	√		

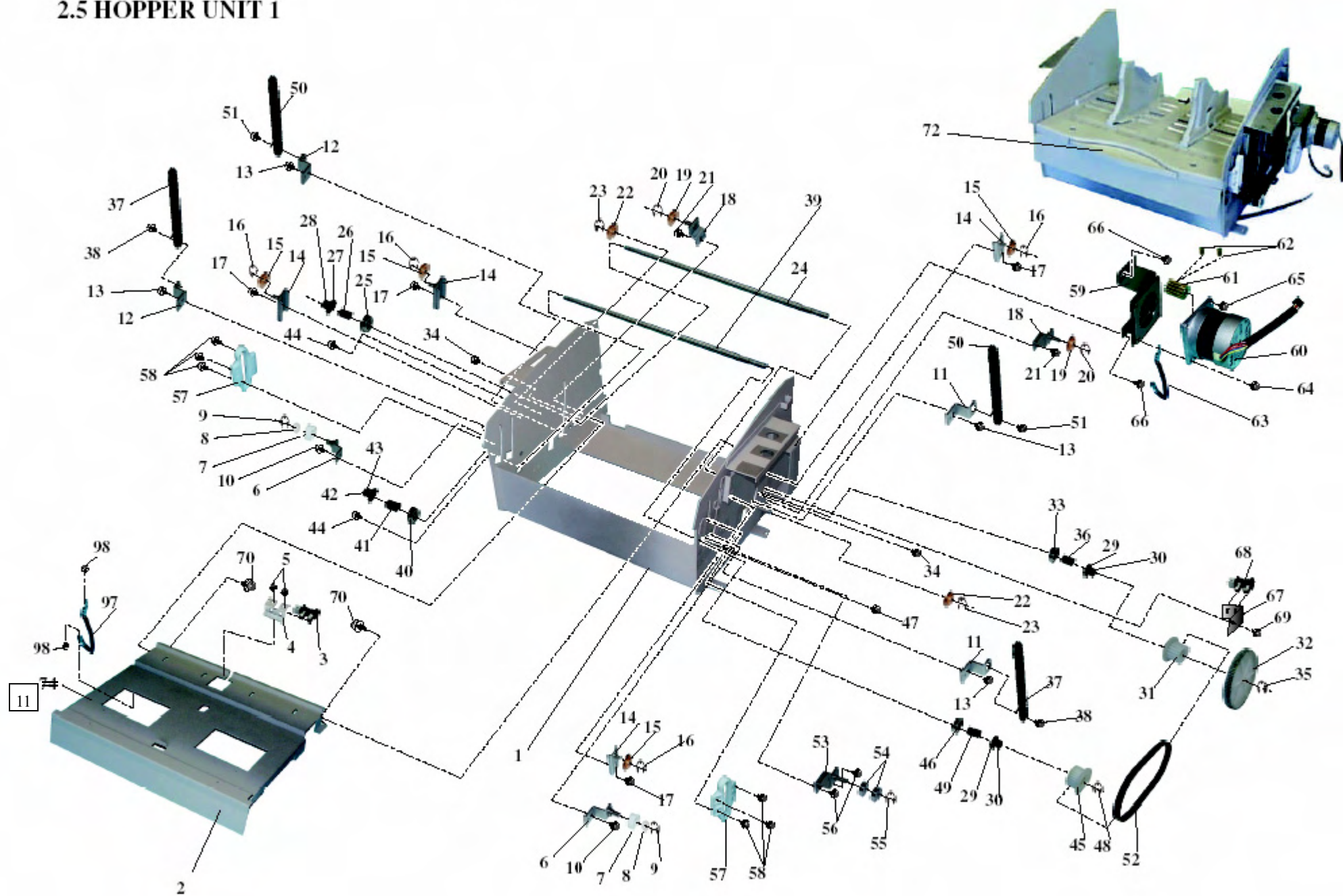
2.5 HOPPER UNIT

Index No.	Composition & Quantity						SP	Specification	Parts name	CA04315 -B002	CA04315 -B003/B017	CA04315 -B012	Remarks
35			1					E RING	√	√	√		
36			1					SPACER	√	√	√		
37			2				@	CA04315-G602	√	√	√		
38			2					SCREW	√	√	√		
39~43			1					SHAFT ASY	√	√	√		
39			1				@	CA02869-Y522	√	√	√		
40			1					BEARING	√	√	√		
41			1					SPACER	√	√	√		
42			1					SPROCKET	√	√	√		
43			1					SCREW	√	√	√		
44			2					SCREW	√	√	√		
45			1				@	CA02869-Y525	√	√	√		
46			1					BEARING	√	√	√		
47			1					SCREW	√	√	√		
48			1					E RING	√	√	√		
49			1					SPACER	√	√	√		
50			2				@	CA02869-G533	√	√	√		
51			2					BOLT	√	√	√		
52			1				*	CA98010-1846	√	√	√		
53~55			1				@	CA02869-F518	√	√	√		
53			1					TENSION BRACKET ASY	√	√	√		
54			2					BEARING	√	√	√		
55			1					E RING	√	√	√		
56			1					SCREW	√	√	√		
57			2				@	CA02869-Y529	√	√	√		
58			6					SCREW	√	√	√		
59~65			1				*	CA04315-F608	√	√	√		
59			1					MOTOR BRACKET ASY	√	√	√		
60			1					STEPPING MOTOR	√	√	√		
61			1					MOTOR GEAR	√	√	√		
62			2					SCREW	√	√	√		
63			1					FG CABLE	√	√	√		
64			1					SCREW	√	√	√		
65			1					SCREW	√	√	√		
66			2					SCREW	√	√	√		
67			1				@	CA04315-Y612	√	√	√		
68			1				*	CA98010-1884	√	√	√		
69			1					SCREW	√	√	√		

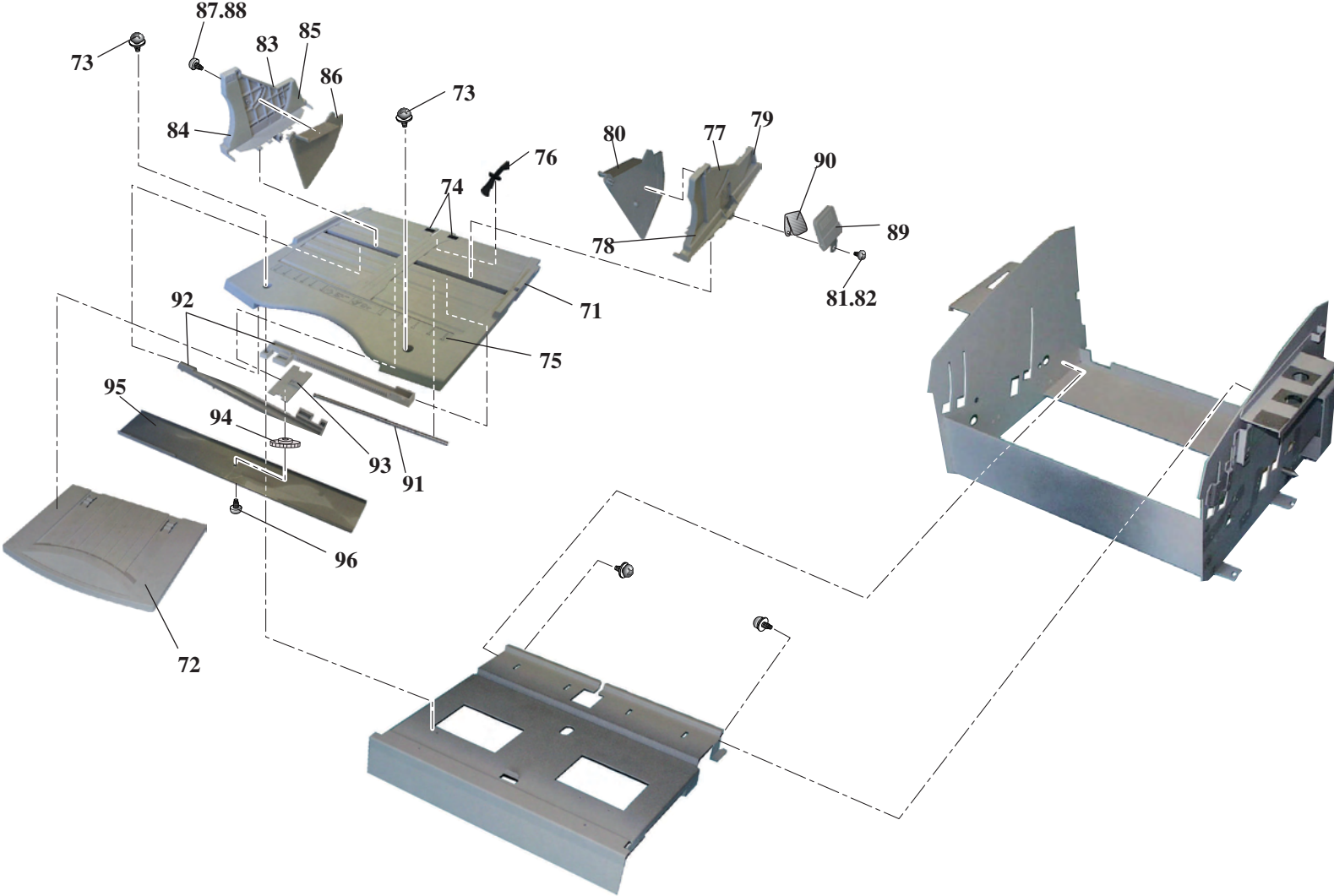
2.5 HOPPER UNIT

Index No.	Composition & Quantity							SP	Specification	Parts name	CA04315 -B002	CA04315 -B003/B017	CA04315 -B012	Remarks
70		2							SCREW	√	√	√		
71~97		1					@	CA04315-F681	HOPPER TABLE ASY	√	√	√		
71~72			1						TABLE ASY	√	√	√		
71				1					TABLE	√	√	√		
72				1			@	CA04315-Y681	RAILE	√	√	√		
73			2						SCREW	√	√	√		
74			2					CA04315-Y683 [11]	PAD	√	√	√		
75			1						LABEL	√	√	√		
76			1				@	CA04315-Y614	LEVER	√	√	√		
77~79			1				@	CA04315-F686	SIDE GUIDE R	√	√	√		
77				1					SIDE GUIDE R	√	√	√		
78				1					SHEET	√	√	√		
79				1					SHEET	√	√	√		
80			1				@	CA02869-Y537	SIDE PLATE R	√	√	√		
81			1						SCREW	√	√	√		
82			1						WASHER	√	√	√		
83~85			1				@	CA04315-F687	SIDE GUIDE L	√	√	√		
83				1					SIDE GUIDE L	√	√	√		
84				1					SHEET	√	√	√		
85				1					SHEET	√	√	√		
86			1				@	CA02869-Y538	SIDE PLATE L	√	√	√		
87			1						SCREW	√	√	√		
88			1						WASHER	√	√	√		
89			1				@	CA01023-Z605	STOPPER	√	√	√		
90			1				@	CA01023-Z625	SPRING	√	√	√		
91		1					@	CA01023-Z606	STOPPER WIRE	√	√	√		
92			2				@	CA01023-Z607	CHUTE	√	√	√		
93			1				@	CA01023-Z608	CHUTE PLATE	√	√	√		
94			1				@	CA01023-Z609	CHUTE GEAR	√	√	√		
95			1				@	CA01023-Z637	METAL FITTING	√	√	√		
96			1						SCREW	√	√	√		
97		1					@	CA04315-Y550	FG CABLE	√	√	√		
98		2							SCREW	√	√	√		

2.5 HOPPER UNIT 1



2.5 HOPPER UNIT 2



2.6 ADF UNIT

Index No.	Composition & Quantity						SP	Specification	Parts name	CA04315 -B002	CA04315 -B003/B017	CA04315 -B012	Remarks
			1										
1~175			1				*	CA04315-E701	ADF UNIT	√	√	√	Refer to P.7
1~18			1				*	CA04315-F711	PICK ROLLER UNIT	√	√	√	Consumables
1				1					GEAR	√	√	√	
2				1					ROLLER	√	√	√	
3				2					SPACER	√	√	√	
4				1					ROLLER	√	√	√	
5				1					SHAFT	√	√	√	
6				1					GEAR	√	√	√	
7				1					ROLLER	√	√	√	
8				2					PICK ROLLER	√	√	√	
9				1					SPACER	√	√	√	
10				1					COVER	√	√	√	
11				1					COVER	√	√	√	
12				2					TAPPING SCREW	√	√	√	
13				6					PLATE	√	√	√	
14				1					PLATE	√	√	√	
15				2					SCREW	√	√	√	
16				1					BRACKET	√	√	√	
17				2					SCREW	√	√	√	
18				2					NUT	√	√	√	
19~73			1						FRAME ASY	√	√	√	
19				1					FRAME ASY	√	√	√	
20				1					SCREW	√	√	√	
21~37				1			@	CA04315-F772	BRAKE ASY	√	√	√	
21				1			@	CA04315-G773	METAL FITTING	√	√	√	
22~26				1			*	CA04315-F773	BRAKE ASY	√	√	√	
22					1				BRAKE	√	√	√	
23					1				GEAR	√	√	√	
24					1				SCREW	√	√	√	
25					1				SHAFT ASSEMBLY	√	√	√	
26					1				SCREW	√	√	√	
27				2					SCREW	√	√	√	
28				1			*	CA98010-1884	SENSOR	√	√	√	
29				1			@	CA04315-Z701	COVER	√	√	√	
30				2					SCREW	√	√	√	
31				1			@	CA04315-Z703	GEAR	√	√	√	
32				2					BEARING	√	√	√	
33				1					E RING	√	√	√	
34				1			@	CA04315-Z704	GEAR	√	√	√	

2.6 ADF UNIT

Index No.	Composition & Quantity						SP	Specification	Parts name	CA04315 -B002	CA04315 -B003/B017	CA04315 -B012	Remarks
35					1		@	05 -Z748 CA04315-Z706	SHAFT	√	√	√	
36					2				BEARING	√	√	√	
37					1				E RING	√	√	√	
38					2				SCREW	√	√	√	
39					1		@	CA04315-Y782	METAL FITTING	√	√	√	
40					1		@	CA02869-Y277	LEVER	√	√	√	
41					1		@	CA01023-Z210	BRASS GROMMET	√	√	√	
42					1		@	CA98010-1864	WASHER	√	√	√	
43					1		@	CA01023-Z212	SPACER	√	√	√	
44					2				SCREW	√	√	√	
45					1		@	CA04315-Y788	LEVER	√	√	√	
46					1				E RING	√	√	√	
47					1		@	F6-SPR6-2	SPACER	√	√	√	
48					1		@	CA04315-Y789	METAL FITTING	√	√	√	
49					1		*	CA98010-1884	SENSOR	√	√	√	
50					1				SCREW	√	√	√	
51					1		@	CA04315-Y798	METAL FITTING	√	√	√	
52					2				SCREW	√	√	√	
53~67					1				BRACKET ASY	√	√	√	
53					1		@	CA04315-Y778	METAL FITTING	√	√	√	
54~59					1		*	CA04315-F705	BRAKE ROLLER	√	√	√	Consumables
54					1				ROLLER ASY	√	√	√	
55					2				LEVER	√	√	√	
56					1				GEAR	√	√	√	
57					1				E RING	√	√	√	
58					1				LEVER	√	√	√	
59					1				LABEL	√	√	√	
60					1		@	05 -Z749 CA04315-Z707	SHAFT	√	√	√	
61					1		@	CA04315-Z708	SPACER	√	√	√	
62					1		@	CA04315-Z705	GEAR	√	√	√	
63					1				BEARING	√	√	√	
64					1				E RING	√	√	√	
65					1				BEARING	√	√	√	
66					1		@	CA04315-Z732	METAL FITTING	√	√	√	
67					2				SCREW	√	√	√	
68					1		@	CA04315-Y780	SHAFT	√	√	√	
69					2		@	D260-2014-X179	BEARING	√	√	√	
70					2				E RING	√	√	√	

2.6 ADF UNIT

Index No.	Composition & Quantity				SP	Specification	Parts name	CA04315 -B002	CA04315 -B003/B017	CA04315 -B012	Remarks
71				1			SCREW	√	√	√	
72				1	@	CA04315-F710 -Z747	UNIVERSAL JOINT	√	√	√	05
73				2	@	CA04315-Z713	COIL SPRING	√	√	√	
74~78			1				LEVER ASY	√	√	√	
74~75				1	@	CA04315-F787	LEVER ASY	√	√	√	
74				1			LEBER ASY	√	√	√	
75				1			LABEL	√	√	√	
76				1	@	CA04315-Z721	SHAFT	√	√	√	
77				2			SCREW	√	√	√	
78				1			SPACER	√	√	√	
79			1				SPACER	√	√	√	
80~81				1	@	CA04315-F785	LEVER ASY	√	√	√	
80				1			LEVER ASY	√	√	√	
81				1			LABEL	√	√	√	
82				2			SCREW	√	√	√	
83				2	@	CA04315-Y787	SPRING	√	√	√	
84~110				1	@	CA04315-F720	SHEET GUIDE ASY	√	√	√	
84				1	@	CA04315-G727	SHEET GUIDE ASY	√	√	√	
85				7	*	CA98010-1886	PRISM	√	√	√	
86				1	*	CA98010-1888 0891 CA04315-0891	SENSOR	√	√	√	Note 07
87				1	@	CA04315-Y790	PLATE	√	√	√	
88				4			LEAF SPRING	√	√	√	
89				4			SCREW	√	√	√	
90				1	@	CA04315-Y767	LEAF SPRING	√	√	√	
91				1			SCREW	√	√	√	
92				1	@	CA04315-G720	COVER ASY	√	√	√	
93				1	@	CA04315-Y723	METAL FITTING	√	√	√	
94				1			SCREW	√	√	√	
95				1	@	CA04315-Y724	METAL FITTING	√	√	√	
96				1			SCREW	√	√	√	
97				1	*	CA98010-1884	SENSOR	√	√	√	
98				1	@	CA04315-Y725	METAL FITTING	√	√	√	
99				1			SCREW	√	√	√	
100~109				1	@	CA04315-F735	SHAFT ASY	√	√	√	
100				1			SHAFT	√	√	√	
101				1			SHAFT	√	√	√	
102				1			GEAR	√	√	√	
103				1			GEAR	√	√	√	
104				1			BEARING	√	√	√	

07 Note: These parts will be applied to the scanner of revision C5 or later. The old parts can be used for the scanner of revision C4 or earlier.

When the old parts are out of stock and need replacing with the new parts, make sure to replace Index No. 86 in Figure 2.6 and No. 9 in Figure 2.9 together.

08 (See ECN: CA04315-0021 for details)

2.6 ADF UNIT

Index No.	Composition & Quantity				SP	Specification	Parts name	CA04315 -B002	CA04315 -B003/B017	CA04315 -B012	Remarks
105				1			BEARING	√	√	√	
106				2			BEARING	√	√	√	
107				1			SPRING	√	√	√	
108				1			E RING	√	√	√	
109				1			PIN	√	√	√	
110				1			SCREW	√	√	√	
111~117			1		@	CA04315-F740	SHAFT ASY	√	√	√	
111				1			SHAFT	√	√	√	
112				1			SPACER	√	√	√	
113				1			GEAR	√	√	√	
114				1			BEARING	√	√	√	
115				1			BEARING	√	√	√	
116				1			E RING	√	√	√	
117				1			BEARING	√	√	√	
118				1			BEARING	√	√	√	
119				1			E RING	√	√	√	
120				1	*	CA04315-Z797	DISELECTRIC BRUSH	√	√	√	
121				4			SCREW	√	√	√	
122				1			WASHER	√	√	√	
123				1			THUMB SCREW	√	√	√	
124~132			1		@	CA04315-F769	SHEET GUIDE ASY	√	√	√	
124				1	@	CA04315-G769	SHEET GUIDE ASY	√	√	√	
125				1	@	CA04315-Y799	PLATE	√	√	√	
126				1	*	CA08010-1880 0892 CA04315-0892	PHOTO INTERRUPTER SENSOR [11]	√	√	√	Note [07]
127				1	@	CA04315-Y767	LEAF SPRING	√	√	√	
128				1			SCREW	√	√	√	
129				7	*	CA04315- 0840 0890	SENSOR	√	√	√	Note [07]
130				3	@	CA04315-Y768	FLAT SPRING	√	√	√	
131				4			SCREW	√	√	√	
132				1			LEAF SPRING	√	√	√	
133				2			SCREW	√	√	√	
134~139			1		*	CA04315-F746	MOTOR ASY	√	√	√	
134				1			BRACKET ASY	√	√	√	
135				1			PULLEY	√	√	√	
136				1			STEPPING MOTOR	√	√	√	
137				1			FG CABLE	√	√	√	
138				1			SCREW	√	√	√	
139				2			SCREW	√	√	√	
140				2			SCREW	√	√	√	

[07] Note: These parts will be applied to the scanner of revision C5 or later. The old parts can be used for the scanner of revision C4 or earlier.

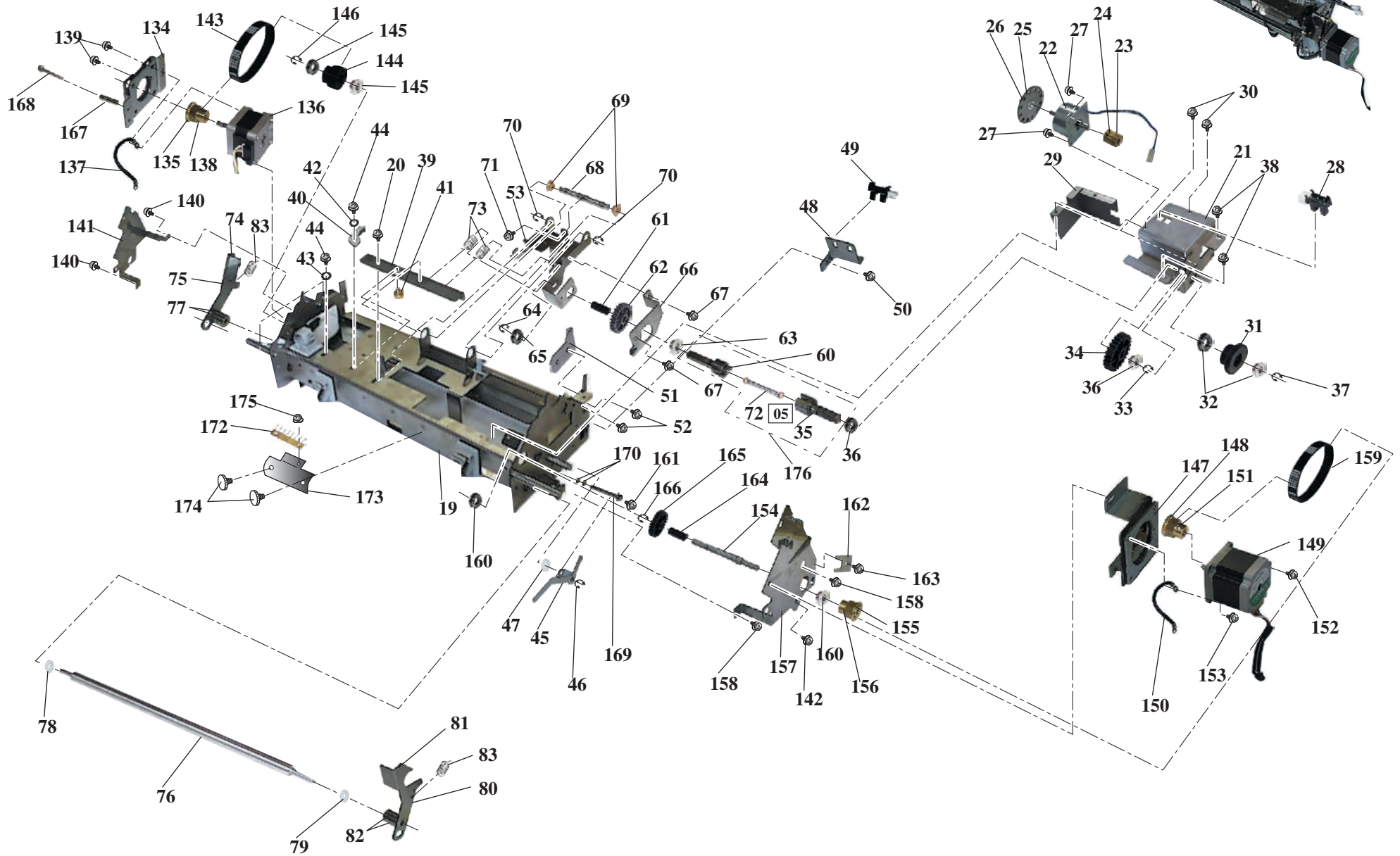
When the old parts are out of stock and need replacing with the new parts, make sure to replace Index No. 126, 129 in Figure 2.6 and No. 2 in Figure 2.9 together.

[08] (See ECN: CA04315-0021 for details)

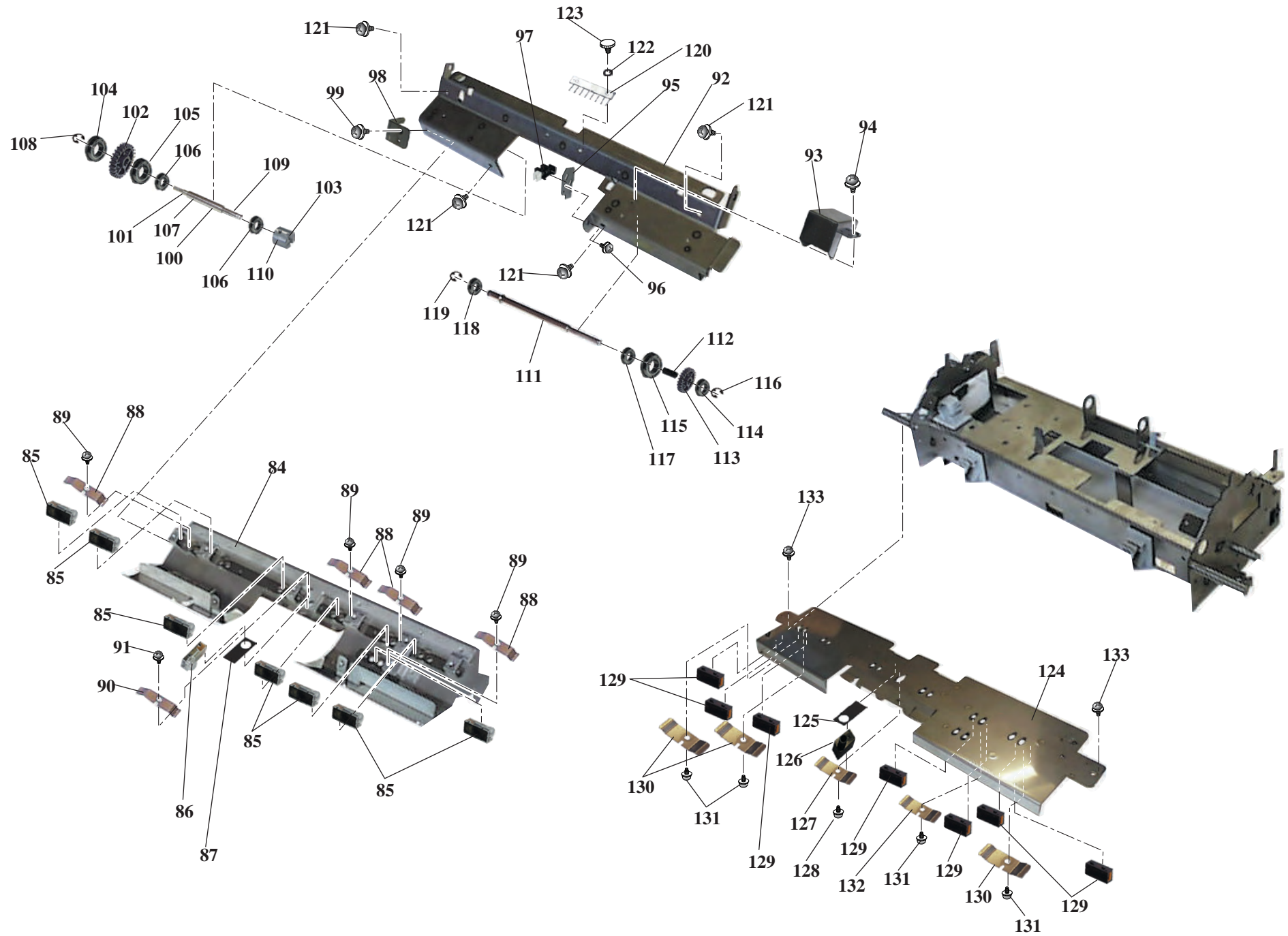
2.6 ADF UNIT

Index No.	Composition & Quantity				SP	Specification	Parts name	CA04315 -B002	CA04315 -B003/B017	CA04315 -B012	Remarks
141			1		@	CA04315-Y749	METAL FITTING	√	√	√	
142			2				SCREW	√	√	√	
143			1		*	CA98010-1847	BELT	√	√	√	
144			1		@	CA04315-Y708	GEAR	√	√	√	
145			2				BEARING	√	√	√	
146			1				E RING	√	√	√	
147~153			1		*	CA04315-F744	MOTOR ASY	√	√	√	
147			1				BRACKET ASY	√	√	√	
148			1				PULLEY	√	√	√	
149			1				STEPPING MOTOR	√	√	√	
150			1				FG CABLE	√	√	√	
151			1				SCREW	√	√	√	
152			1				SCREW	√	√	√	
153			1				SCREW	√	√	√	
154~156			1		@	CA04315-F739	SHAFT ASY	√	√	√	
154			1				SHAFT	√	√	√	
155			1				PULLEY	√	√	√	
156			1				SCREW	√	√	√	
157			1		@	CA04315-Y748	METAL FITTING	√	√	√	
158			2				SCREW	√	√	√	
159			1		*	CA98010-1849	BELT	√	√	√	
09 160			2		@	CA80409-0161	BEARING	√	√	√	
161			1				SCREW	√	√	√	
162			1		@	CA04315-Y750	FLAT SPRING	√	√	√	
163			1				SCREW	√	√	√	
164			1		@	CA04315-Y743	SPACER	√	√	√	
165			1		@	CA04315-Y742	GEAR	√	√	√	
09 166			1		@	F6-ER4-SUS	E RING	√	√	√	
167			1		@	F6-SPK4-20S	SPACER	√	√	√	
168			1				SCREW	√	√	√	
169			1				SCREW	√	√	√	
170			2				NUT	√	√	√	
171			1				LABEL	√	√	√	
172			1		*	CA04315-Z797	DISELECTRIC BRUSH	√	√	√	
173			1				METAL FITTING	√	√	√	
174			2				THUNB SCREW	√	√	√	
175			1				SCREW	√	√	√	
05 176			1			CA04315-F747	UNIVERSAL JOINT SET	√	√	√	

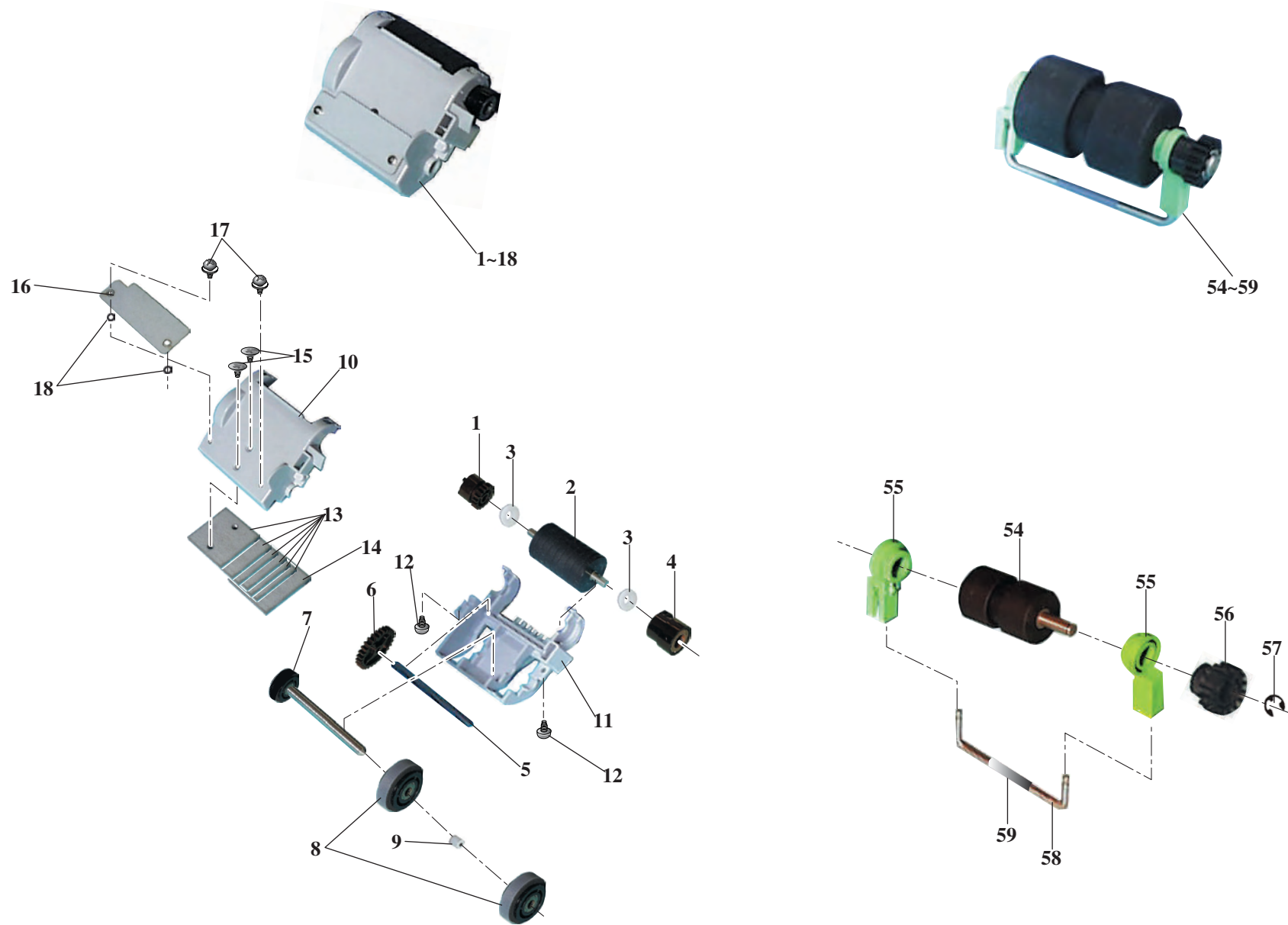
2.6 ADF UNIT 1



2.6 ADF UNIT 2



2.6 ADF UNIT 3



2.7 UPPER TRANSFER UNIT

Index No.	Composition & Quantity							SP	Specification	Parts name	CA04315 -B002	CA04315 -B003/B017	CA04315 -B012	Remarks
1~136			1						UPPER TRANSFER UNIT	√	√	√	Refer to P.4	
1			1						UPPER FRAME ASY	√	√	√		
2			1				@	CA04315-G333	METAL FITTING ASY	√	√	√		
3			1						E RING	√	√	√		
4			1				@	CA04315-G334	METAL FITTING	√	√	√		
5			1						E RING	√	√	√		
6~7			1						BRACKET ASY	√	√	√		
6				1			@	CA04315-Y339	METAL FITTING	√	√	√		
7				1			*	CA98010-1884	SENSOR	√	√	√		
8			1						SCREW	√	√	√		
9~11			1						SHAFT ASY	√	√	√		
9				1			@	CA04315-Y344	SHAFT	√	√	√		
10				1			@	CA04315-G341	METAL FITTING ASY	√	√	√		
11				2					SCREW	√	√	√		
12			1						BRACKET ASY	√	√	√		
13				2					SCREW	√	√	√		
14~26			1				@	CA04315-F350	SHEET GUIDE ASY	√	√	√		
14~15				1					SHEET GUIDE ASY	√	√	√		
14					1				SHEET GUIDE ASY	√	√	√		
15					1				GLASS	√	√	√		
16				1			@	CA04315-Y357	FLAT SPRING	√	√	√		
17				1					SCREW	√	√	√		
18				1			@	CA04315-Y358	FLAT SPRING	√	√	√		
19				1					SCREW	√	√	√		
20				1					PLATE	√	√	√		
21				1					LEAF SPRING	√	√	√		
22				1			*	CA98010-1886	PRISM	√	√	√		
23				1					SCREW	√	√	√		
24				4					RIVET	√	√	√		
25				2					WASHER	√	√	√		
26				1					LABEL	√	√	√		
27				1			@	CA04315-G360	METAL FITTING	√	√	√		
28				2					SCREW	√	√	√		
29~31				1			@	CA04315-F363	SHEET GUIDE ASY	√	√	√	White Plate	
29~31				1			@	CA04315-F364	BLACK BACKGROUND	√	√	√	Black Plate (Option)	
29					1				SHEET GUIDE	√	√	√		
30					1				WHITE PLATE	√	√	√		
30					1				BLACK PLATE	√	√	√	(Option)	
31					1				GLASS	√	√	√		
32					2			05 CA04315-Y085	COIL SPRING	√	√	√		

2.7 UPPER TRANSFER UNIT

Index No.	Composition & Quantity				SP	Specification	Parts name	CA04315 -B002	CA04315 -B003/B017	CA04315 -B012	Remarks
33			2			05 CA04315-3305	BUSH	√	√	√	
34			2			05 CA04315-Y393	SPACER	√	√	√	
35			2				SCREW	√	√	√	
36~40			1		@	CA04315-F366	SHEET GUIDE ASY	√	√	√	
36			1		@	CA04315-G366	SHEET GUIDE ASY	√	√	√	
37			4		@	CA04315-Y388	COIL SPRING	√	√	√	
38~40			2		*	CA04315-F383	ROLLER ASY	√	√	√	
38				4			ROLLER	√	√	√	
39				2			SHAFT	√	√	√	
40				4			E RING	√	√	√	
41			2				SCREW	√	√	√	
42			2				SCREW	√	√	√	
43~48			1		@	CA04315-F202	SHEET GUIDE ASY	√	√	√	
43			1		@	CA04315-G201	METAL FITTING ASY	√	√	√	
44			1		*	CA04315-1886 CA98010-1886 [11]	PRISM	√	√	√	
45			1				LEAF SPRING	√	√	√	
46			1				SCREW	√	√	√	
47			1		@	CA04315-F204	SPONGE PAD ASY	√	√	√	
48			1				SCREW	√	√	√	
49			2				SCREW	√	√	√	
50~58			1		@	CA04315-F380	ROLLER ASY	√	√	√	
50			1		@	CA04315-G380	METAL FITTING ASY	√	√	√	
51			1		@	CA04315-Y383	METAL FITTING	√	√	√	
52			2		@	CA04315-Y386	SPRING	√	√	√	
53			2		@	CA04315-Y331	BLOCK	√	√	√	
54			1				SCREW	√	√	√	
55~58			1		*	CA04315-F382	ROLLER ASY	√	√	√	
55				2			ROLLER	√	√	√	
56				4			BEARING	√	√	√	
57				1			SHAFT	√	√	√	
58				2			E RING	√	√	√	
59			2				SCREW	√	√	√	
60~67			4		@	CA04315-F381	ROLLER ASY	√	√	√	
60			4				BRACKET ASY	√	√	√	
61			4				METAL FITTING	√	√	√	
62			8		@	CA4315-Y387 CA04315-Y387 [11]	SPRING	√	√	√	
63			8				BLOCK	√	√	√	
64			4				SCREW	√	√	√	
65~67			4		*	CA04315-F383	ROLLER ASY	√	√	√	
65			8				ROLLER	√	√	√	

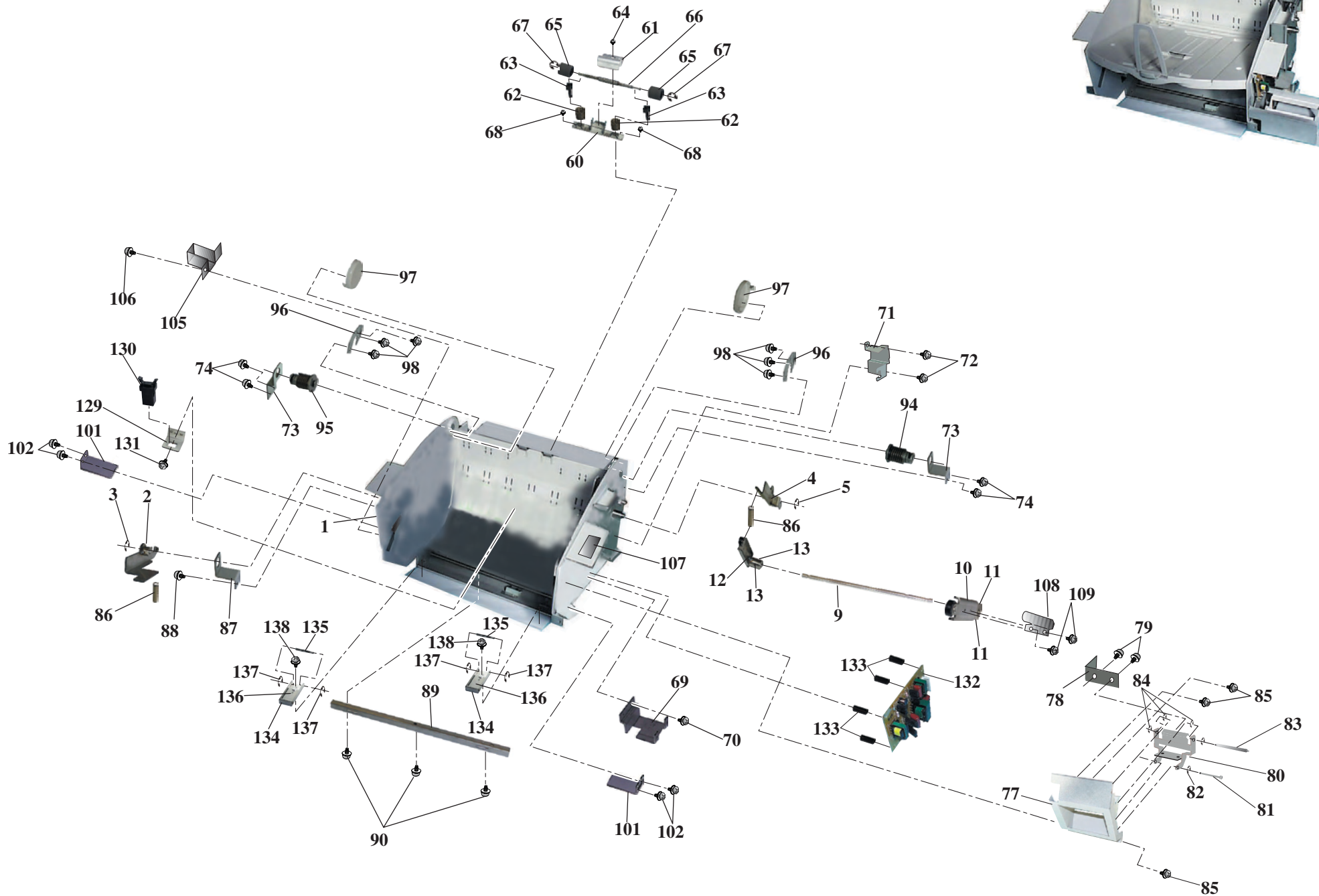
2.7 UPPER TRANSFER UNIT

Index No.	Composition & Quantity				SP	Specification	Parts name	CA04315 -B002	CA04315 -B003/B017	CA04315 -B012	Remarks
66				4			SHAFT	√	√	√	
67				8			E RING	√	√	√	
68			8				SCREW	√	√	√	
69			1		@	CA04315-Y318	METAL FITTING	√	√	√	
70			1				SCREW	√	√	√	
71			1		@	CA04315-Y319	METAL FITTING	√	√	√	
72			2				SCREW	√	√	√	
73			2		@	CA04315-Y320	METAL FITTING	√	√	√	
74			4				SCREW	√	√	√	
75			1		@	CA04315-Y321	METAL FITTING	√	√	√	
76			2				SCREW	√	√	√	
77~84			1		@	CA04315-F981	METAL FITTING ASY	√	√	√	
77			1		@	CA04315-G981	METAL FITTING ASY	√	√	√	
78			1		@	CA04315-Y983	METAL FITTING	√	√	√	
79			2				SCREW	√	√	√	
80			1		@	CA04315-Y984	LEVER	√	√	√	
81			1				SHAFT	√	√	√	
82			1				E RING	√	√	√	
83			1				SHAFT	√	√	√	
84			4				E RING	√	√	√	
85			3				SCREW	√	√	√	
86			2		@	CA04315-Y338	SPRING	√	√	√	
87			1		@	CA04315-Y336	METAL FITTING	√	√	√	
88			1				SCREW	√	√	√	
89			1		@	CA04315-G340	METAL FITTING	√	√	√	
90			3				SCREW	√	√	√	
91			2		@	CA04315-Y385	SHAFT	√	√	√	
92			2				SPACER	√	√	√	
93			2				E RING	√	√	√	
94			1		@	CA98010-1843	LOCK HINGE	√	√	√	
95			1		@	CA98010-1844	LOCK HINGE	√	√	√	
96			2		@	CA01023-Z364	PLATE	√	√	√	
97			2		@	CA01023-Z365	CAP	√	√	√	
98			6				SCREW	√	√	√	
99			1		@	CA98010-1845	MAGNET CATCH	√	√	√	
100			2				SCREW	√	√	√	
101			2		@	CA04315-Y317	METAL FITTING	√	√	√	
102			4				SCREW	√	√	√	
103			1		@	CA04315-Y394	LEAF SPRING	√	√	√	

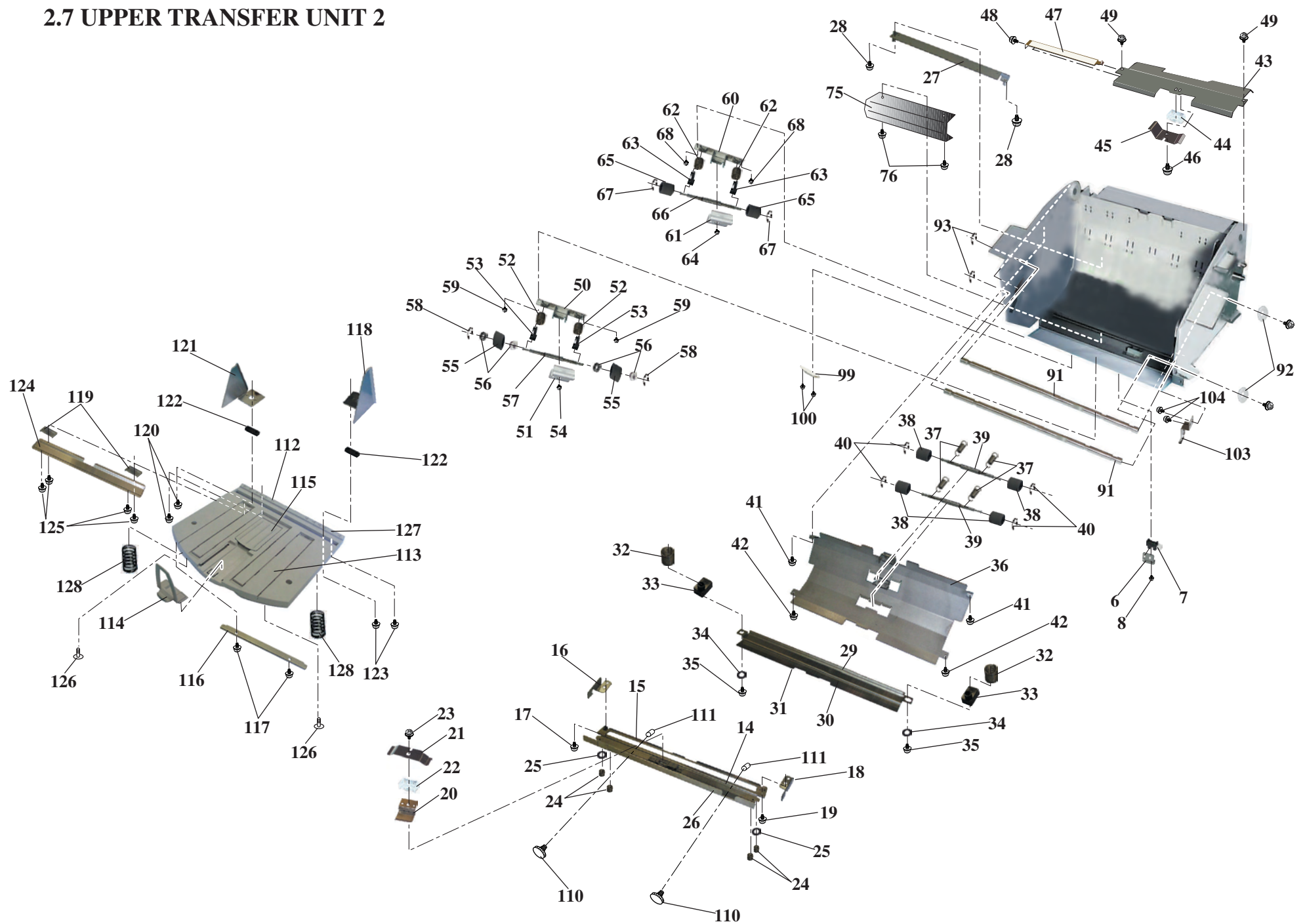
2.7 UPPER TRANSFER UNIT

Index No.	Composition & Quantity				SP	Specification	Parts name	CA04315 -B002	CA04315 -B003/B017	CA04315 -B012	Remarks
104			2				SCREW	√	√	√	
105			1		@	CA04315-Z325	METAL FITTING	√	√	√	
106			1				SCREW	√	√	√	
107			1				LABEL	√	√	√	
108			1		@	CA04315-Y986 CA04315-Y986 [12]	METAL FITTING	√	√	√	
109			2				SCREW	√	√	√	
110			2		@	F6-STUM3-141 F6-STUM3-161 [11]	SCREW	√	√	√	
111			2		@	CT-NO5563- TOCHIGIYA	WASHER	√	√	√	
112~127			1		@	CA04315-F370	STACKER ASY	√	√	√	
112~115			1				TABLE ASY	√	√	√	
112				1	@	CA04315-Y370	TABLE	√	√	√	
113				1	@	CA04315-Y371	TABLE	√	√	√	
114				1	@	CA04315-Y372	STOPPER	√	√	√	
115				1	@	CA04315-Y373	STOPPER	√	√	√	
116			1		@	CA04315-Y374	METAL FITTING	√	√	√	
117			2				TAPPING SCREW	√	√	√	
118			1		@	CA04315-G376	METAL FITTING R ASY	√	√	√	
119			2		@	CA04315-Y379	FLAT SPRING	√	√	√	
120			2				SCREW	√	√	√	
121			1		@	CA04315-G377	METAL FITTING L ASY	√	√	√	
122			2		@	CA04315-Z378	SPACER	√	√	√	
123			2				SCREW	√	√	√	
124			1		@	CA04315-Y395	METAL FITTING	√	√	√	
125			4				TAPPING SCREW	√	√	√	
126			2		@	CA98001-1851	NYLON RIVET	√	√	√	
127			1				LABEL	√	√	√	
128			2		@	CA04315-Y375	SPRING	√	√	√	
129			1		@	CA04315-Y389	METAL FITTING	√	√	√	
130			1				LATCH	√	√	√	
131			1				SCREW	√	√	√	
132			1		*	CA04315-0450	INVERTER	√	√	√	
133			4		@	CA98010-2130	SPACER	√	√	√	
134~138			2		@	CA02869-F386	METAL FITTING ASY	√	√	√	
134			2				METAL FITTING	√	√	√	
135			2				SHAFT	√	√	√	
136			2				METAL FITTING	√	√	√	
137			4				E RING	√	√	√	
138			2				SCREW	√	√	√	

2.7 UPPER TRANSFER UNIT 1



2.7 UPPER TRANSFER UNIT 2

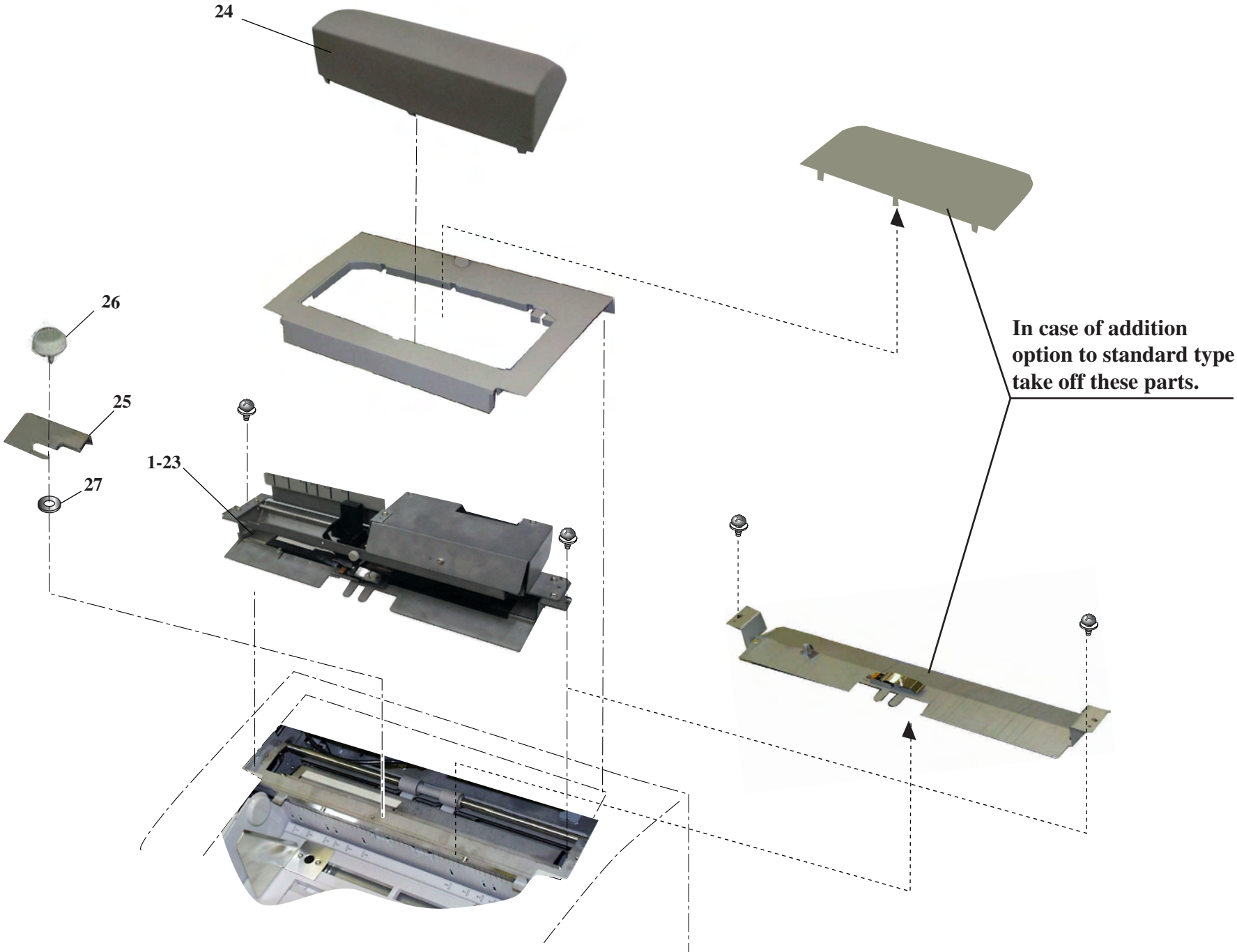


2.8 OPTION (ENDORSER)

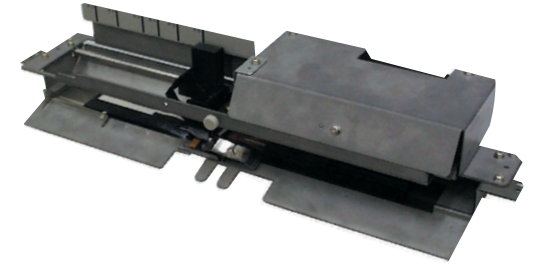
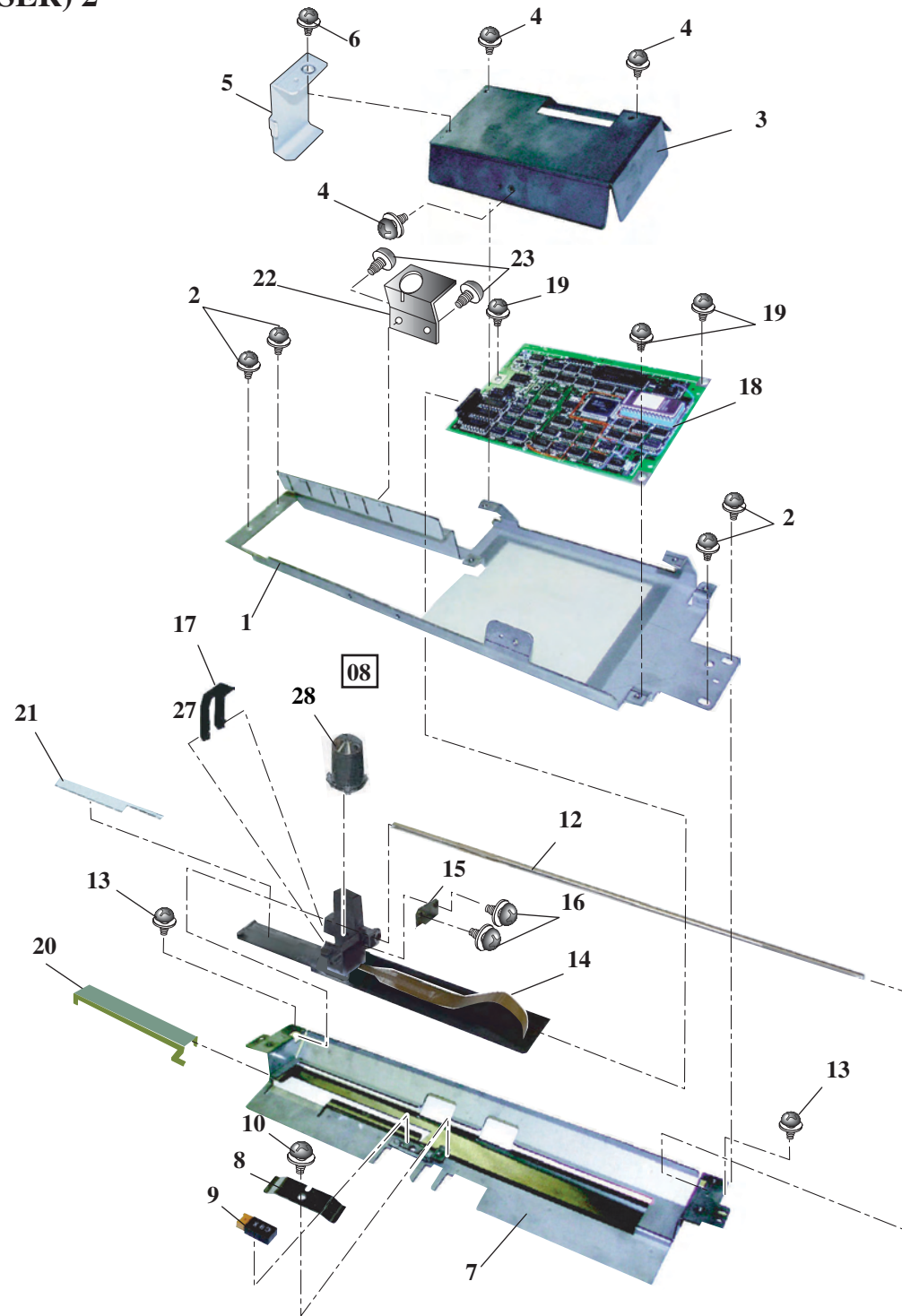
Index No.	Composition & Quantity							SP	Specification	Parts name	CA04315 -B002	CA04315 -B003/B017	CA04315 -B012	Remarks
	1													
	1							@	CA04315-D201	ENDORSER	√	√	√	
1~23	1									ENDORSER UNIT	√	√	√	
1		1								METAL FITTING	√	√	√	
2		4								SCREW	√	√	√	
3		1								METAL FITTING	√	√	√	
4		3								SCREW	√	√	√	
5		1								METAL FITTING	√	√	√	
6		1								SCREW	√	√	√	
7~13		1								METAL FITTING	√	√	√	
7			1							METAL FITTING	√	√	√	
8			1							LEAF SPRING	√	√	√	
9			1					*	CA04315-0849 0890	SENSOR	√	√	√	07
10			1							SCREW	√	√	√	
08 12 11		1								SHAFT	√	√	√	
08 13 12		2								SCREW	√	√	√	
13~15		1						@	CA04315-F209	FPC CABLE ASY	√	√	√	
08 14 13			1							FPC CABLE ASY	√	√	√	
08 15 14			1							METAL FITTING	√	√	√	
08 16 15			2							SCREW	√	√	√	
08 17 16		1						@	05 CA04315-G212	LEVER	√	√	√	
08 18 17		1						*	CA020137-B85X	PRINTER DRIVER	√	√	√	
08 19 18		3								SCREW	√	√	√	
08 20 19		1								METAL FITTING	√	√	√	
08 21 20		1						*	CA04315-Y234	HEAD PAD	√	√	√	
08 22 21		1								METAL FITTING	√	√	√	
08 23 22		2								SCREW	√	√	√	
08 24 23		1						@	CA04315-Y932	ENDORSER COVER	√	√	√	
08 25 24		1						*	CA04315-G231	ROLLER PAD	√	√	√	
08 26 25		1								THUMB SCREW	√	√	√	
08 27 26		1								WASHER	√	√	√	
08 28 27		1						*	CA01023-0707 CA01023-0701 11	PRINT HEAD	√	√	√	

08 Note: When the old parts are out of stock and need replacing with the new one, makes sure to replace Index No.78 in Figure 2.4 and No.8 in Figure 2.9 together.
(See ECN: CA04315-0021 for details.)

2.8 OPTION (ENDORSER) 1



2.8 OPTION (ENDORSER) 2



2.9 CABLE

Index No.	Composition & Quantity	SP	Specification	Parts name	CA04315 -B002	CA04315 -B003/B017	CA04315 -B012	Remarks
	1		CA04315-F851	CCD CABLE	√	√	√	
07	2		CA04315-F862 F896	SENSOR CABLE	√	√	√	Note 2 07
	3		CA04315-F855	CABLE	√	√	√	
	4		CA04315-F854	INVERTER CABLE	√	√	√	
	5		CA04315-F857	SENSOR CABLE	√	√	√	
06	6		CA04315-F852	CCD CABLE B	√	√	√	
06	7		CA04315-F853	CCD CABLE F	√	√	√	
07	8		CA04315-F897	SENSOR CABLE	√	√	√	Note 3 07
07	9		CA04315-F884	SENSOR CABLE	√	√	√	Note 1 07
08	10		CA04315-F876	ENDORSER CABLE	√	√	√	
12	11		CA04315-F858	CABLE	√	√	√	
12	12		CA04315-F859	CABLE	√	√	√	
12	13		CA04315-F864	OP CABLE	√	√	√	
12	14		CA04315-F865	CABLE	√	√	√	
12	15		CA04315-F866	MOTOR CABLE	√	√	√	

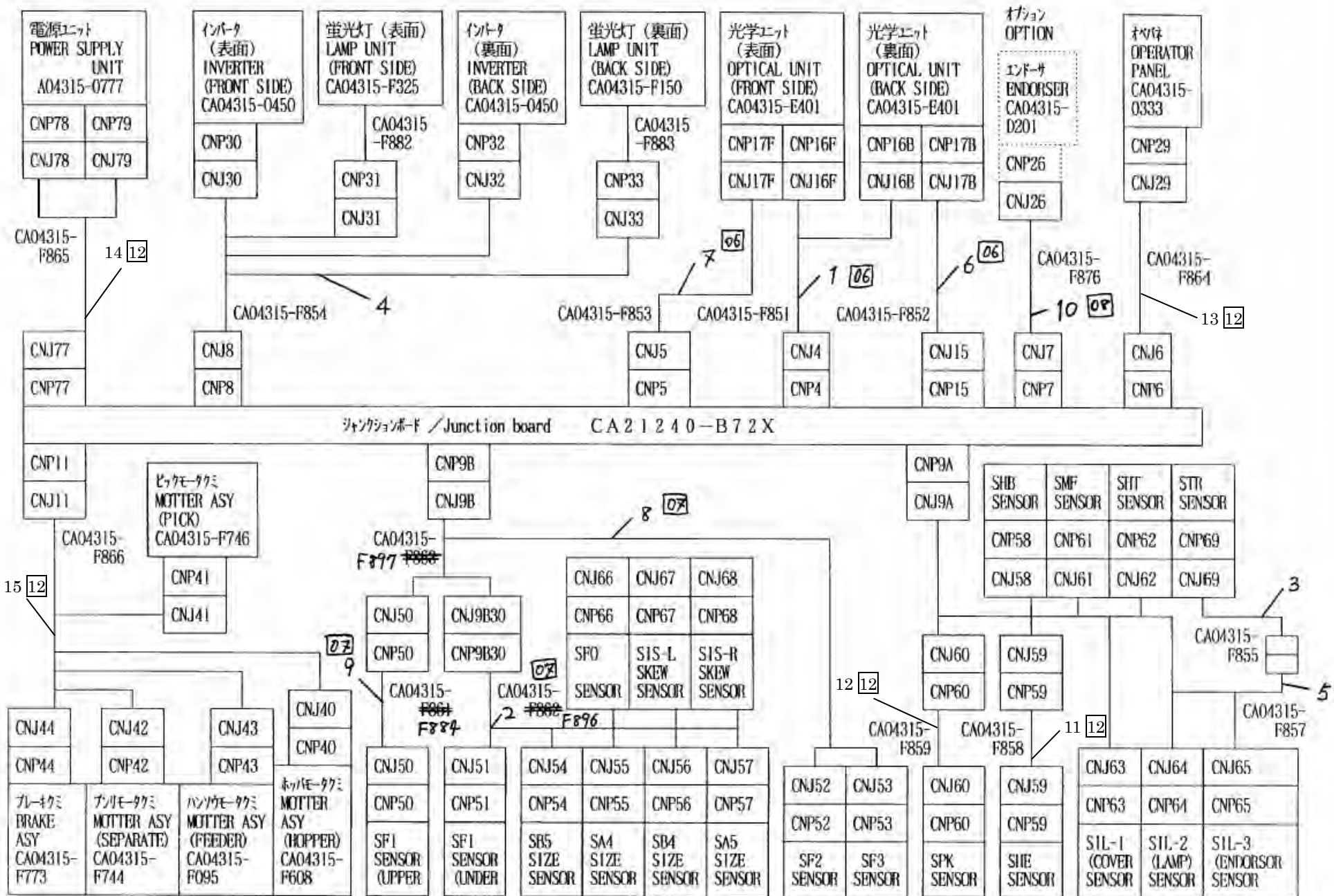
Note 1: When replacing Index No.86 in Figure 2.6 with the new one, Index No.9 in Figure 2.9 should be replaced at the same time.

Note 2: When replacing Index No.126, 129 in Figure 2.6 with the new one, Index No.2 in Figure 2.9 should be replaced at the same time.

08 Note 3: When replacing Index No.78 or 89 (No.9 in Figure 2.8 if Endorser option is installed) in Figure 2.4 with the new one, Index No.8 in Figure 2.9 should be replaced at the same time.

08 (See ECN: CA04315-0021 for details of Note 1 through 3)

2.9 CABLES





09

67



09

35a